

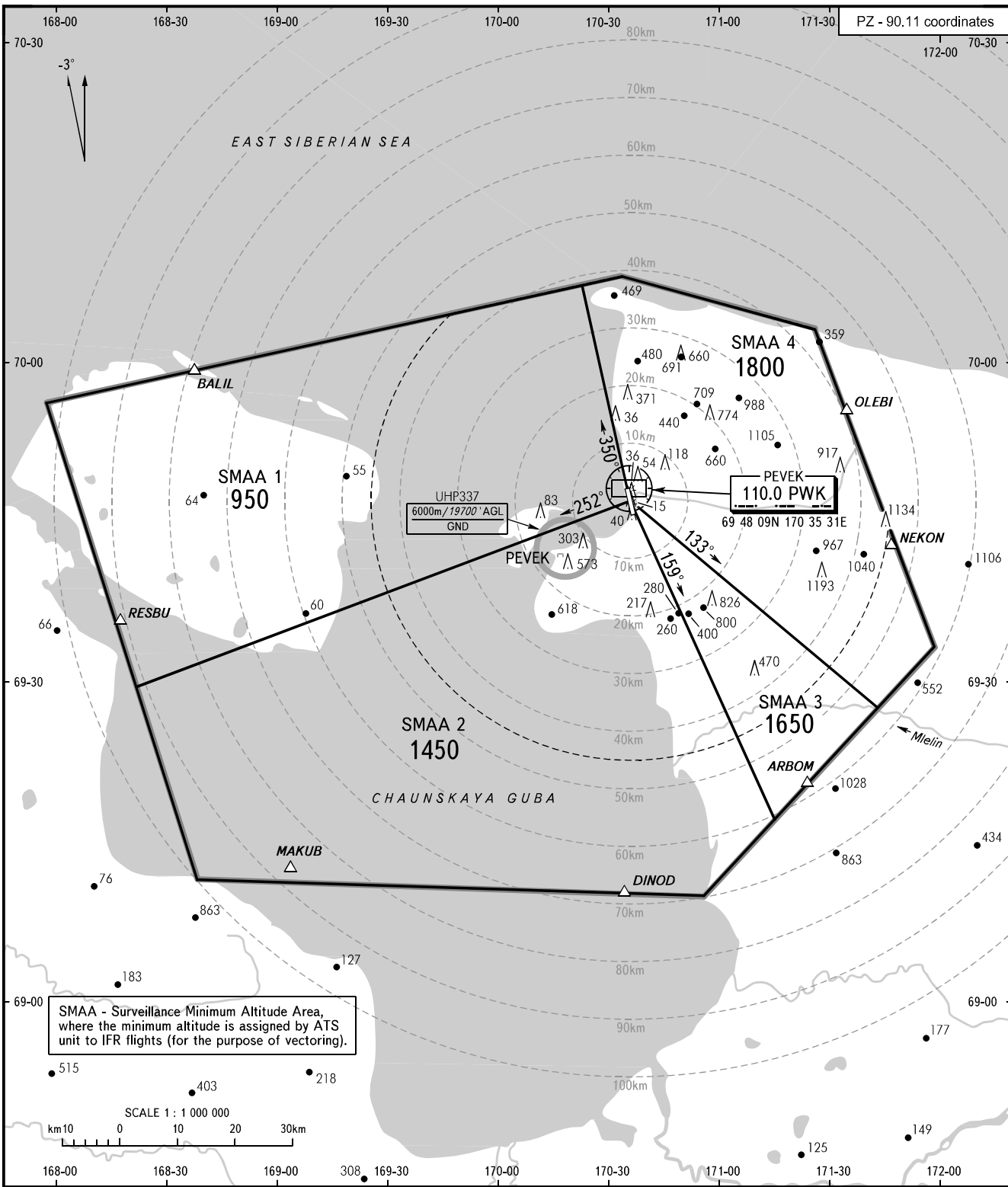
ATC SURVEILLANCE MINIMUM
ALTITUDE CHART - ICAO

ELEV
3m

TRANSITION
HEIGHT : (1800)

PEVEK, RUSSIA

PEVEK



RADAR 124.200

NOTE:
1. The chart may only be used for cross-checking of altitudes assigned while the aircraft is under radar control.
2. When vectoring is carried out under low-temperature conditions, minimum vectoring altitudes for IFR flight must be corrected by altimeter temperature correction.

BEARINGS AND TRACKS ARE MAGNETIC
ALTITUDES AND ELEVATIONS IN METRES
DISTANCES IN KILOMETRES

Alt set: - QFE(QNH on req);
- mm on req(hPa).

CHANGE: New chart

PEVEK, RUSSIA

PEVEK

SURVEILLANCE MINIMUM ALTITUDE AREAS		
IDENT	MNM ALT (m)	LATERAL LIMITS (PZ-90.11 coordinates)
SMAA 1	950	694700N 1703549E - 700712N 1702232E - 695500N 1675700E - 692847N 1682413E - 694700N 1703549E.
SMAA 2	1450	694700N 1703549E - 692847N 1682413E - 691100N 1684200E - 691000N 1705500E - 691708N 1711355E - 694700N 1703549E.
SMAA 3	1650	694700N 1703549E - 692726N 1714143E - 691708N 1711355E - 694700N 1703549E.
SMAA 4	1800	694700N 1703549E - 700712N 1702232E - 700800N 1703300E - 700300N 1712600E - 694424N 1714512E - 693300N 1715700E - 692726N 1714143E - 694700N 1703549E.