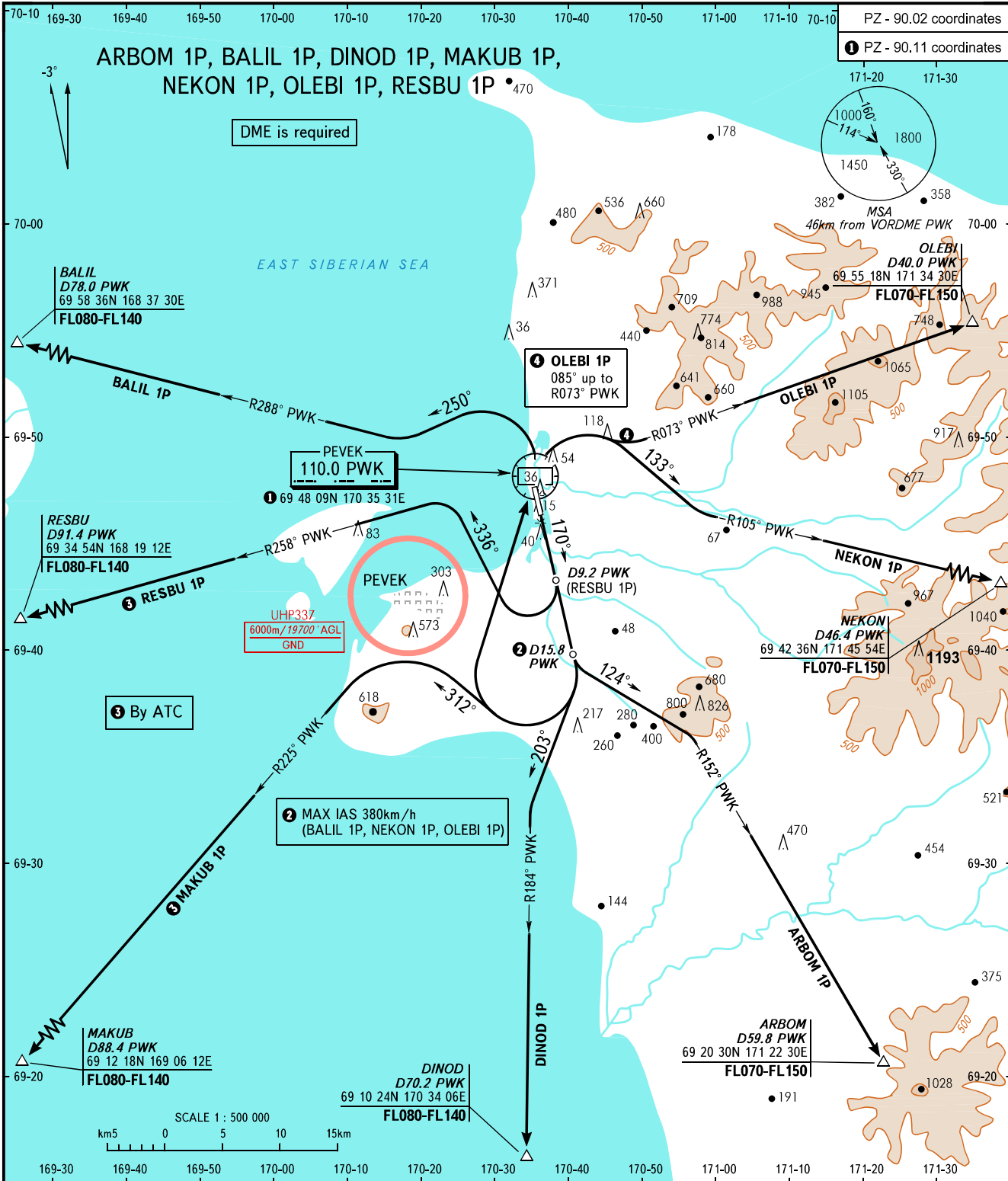


STANDARD DEPARTURE CHART  
INSTRUMENT (SID) - ICAO

TRANSITION  
HEIGHT : (1800)

PEVEK, RUSSIA  
PEVEK  
RWY 17



RADAR 124.200

**WARNING**

The minimum climb gradients required due to the airspace structure:  
 - 3.6% up to FL070 for MAKUB 1P;  
 - 4.8% up to FL070 for DINOD 1P;  
 - 7.4% up to (1400) for BALIL 1P, NEKON 1P, OLEBI 1P.  
 The minimum climb gradients required due to the obstacles:  
 - 3.4% up to (550) for BALIL 1P, MAKUB 1P, NEKON 1P, OLEBI 1P;  
 - 4.2% up to (700) for RESBU 1P;  
 - 5.2% up to (1750) for ARBOM 1P.

BEARINGS AND TRACKS ARE MAGNETIC  
ALTITUDES, HEIGHTS AND ELEVATIONS IN METRES  
DISTANCES IN KILOMETRES

Alt set; -QFE(QNH on req);  
-mm(hPa on req).