

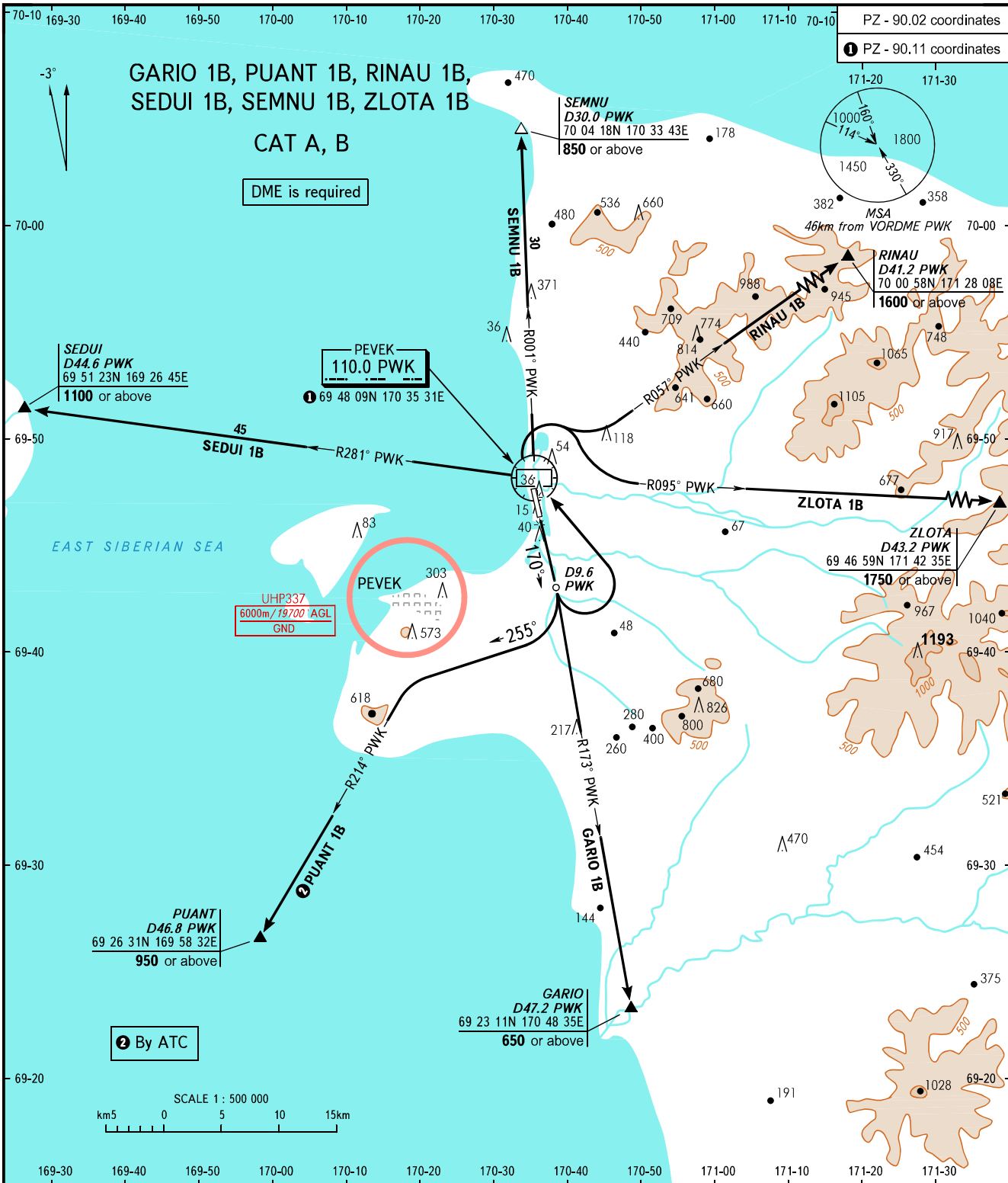
STANDARD DEPARTURE CHART
INSTRUMENT (SID) - ICAO

TRANSITION
HEIGHT : (1800)

PEVEK, RUSSIA

PEVEK

RWY 17



RADAR 124.200

WARNING
The minimum climb gradients required due to the obstacles:
- 3.7% up to (1200) for ZLOTA 1B;
- 4.1% up to (800) for PUANT 1B;
- 4.1% up to (1600) for RINAU 1B.

BEARINGS AND TRACKS ARE MAGNETIC
ALTITUDES, HEIGHTS AND ELEVATIONS IN METRES
DISTANCES IN KILOMETRES

Alt set; -QFE(QNH on req);
-mm(hPa on req).

CHANGE: New chart