

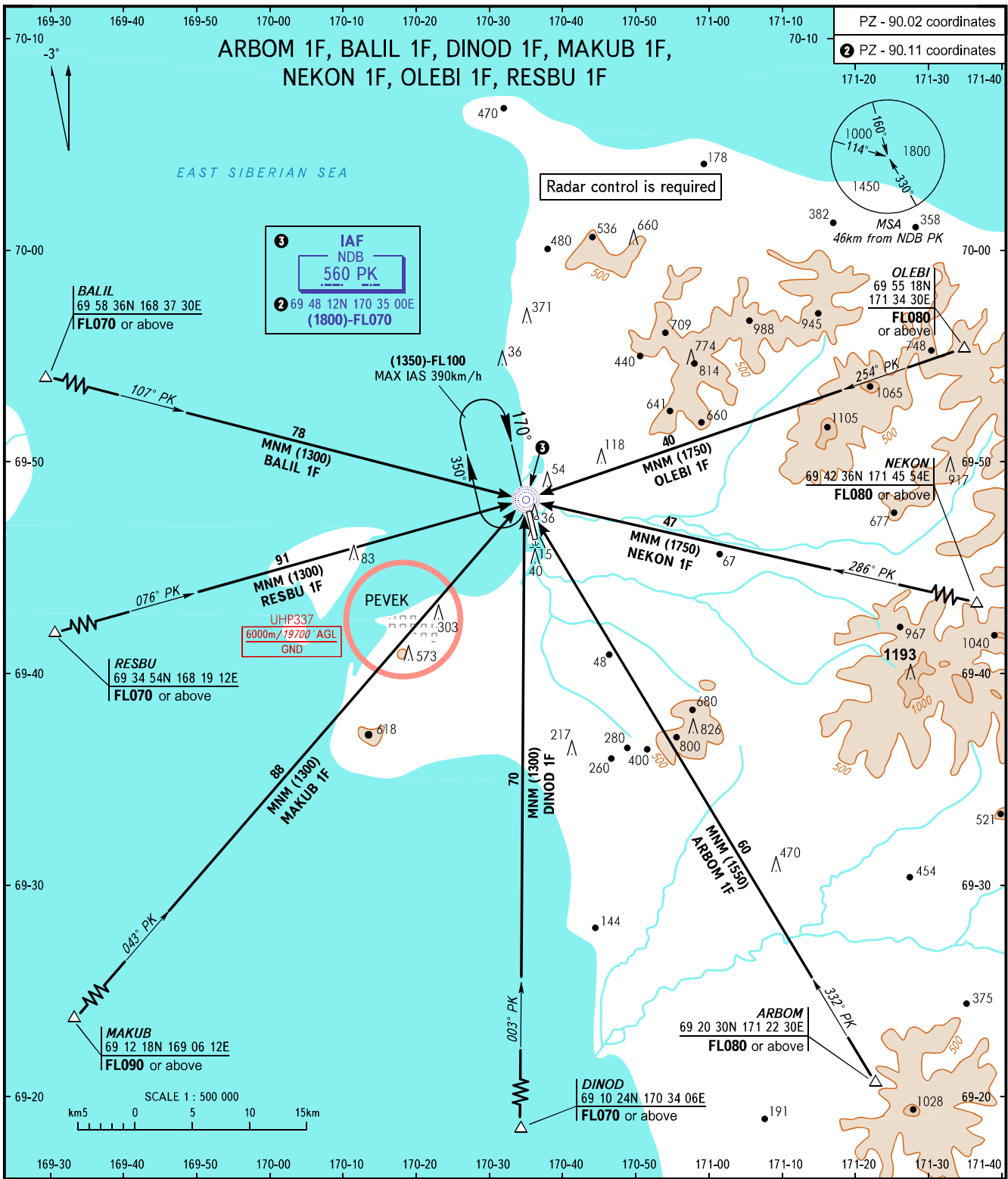
STANDARD ARRIVAL CHART
INSTRUMENT (STAR) - ICAO

PEVEK, RUSSIA

PEVEK

RWY 17

TRANSITION
LEVEL : ①



① IAF
NDB
560 PK
② 69 48 12N 170 35 00E
(1800)-FL070

UHP337
6000m/19700' AGL
GND

RADAR 124.200

- ① TRANSITION LEVEL:
- FL070 when QFE is 760mm mercury column or above;
 - FL080 when QFE is 733mm mercury column or above, but less than 760mm mercury column;
 - FL090 when QFE is less than 733mm mercury column.

WARNING

When continuous radar control by TAR is not provided, ACFT shall proceed to NDB PK at transition level and turn RIGHT to join the procedure.

BEARINGS AND TRACKS ARE MAGNETIC
ALTITUDES, HEIGHTS AND ELEVATIONS IN METRES
DISTANCES IN KILOMETRES

Alt set: -QFE(QNH on req);
-mm(hPa on req).

CHANGE: New chart