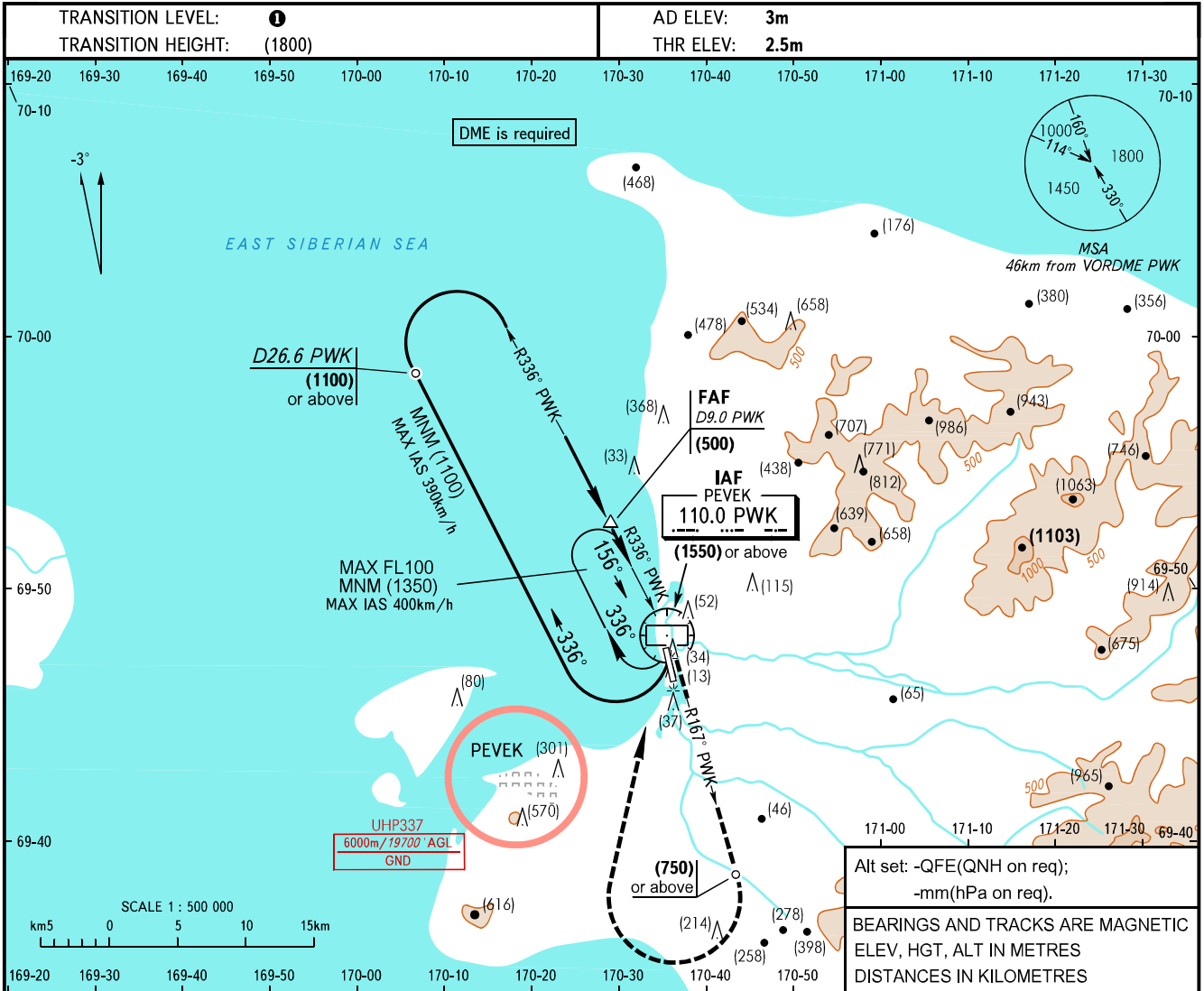


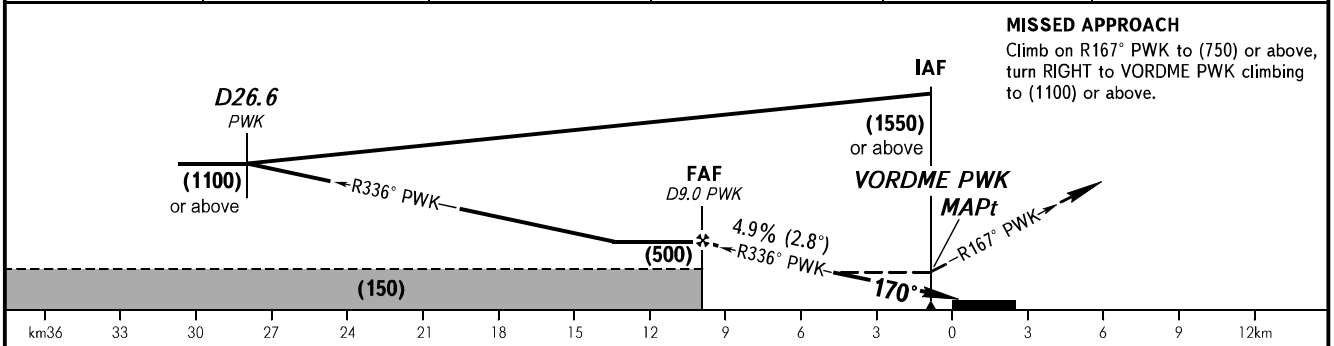
**INSTRUMENT  
APPROACH  
CHART - ICAO**

RADAR 124.200

**PEVEK, RUSSIA  
RUSSIA  
VOR RWY 17**



DME PWK	9.0	8.0	6.0	4.0	2.0
HEIGHT	(500)	(448)	(350)	(252)	(154)



OCA(H)		A	B	C	D
Straight-in Approach		115(115)	115(115)	130(125)	135(130)
Circling		145(145)	145(145)	240(235)	425(425)

- ① TRANSITION LEVEL:**
- FL070 when QFE is 760mm mercury column or above;
  - FL080 when QFE is 733mm mercury column or above, but less than 760mm mercury column;
  - FL090 when QFE is less than 733mm mercury column.
- WARNING:**
1. Final approach track is offset by 14° from the RWY centre line.
  2. Turn before MAPt is PROHIBITED.
  3. Chart is AVBL by arrangement with ATC.
  4. MAPt at VORDME PWK. Timing not authorized for defining MAPt.

GROUND SPEED	km/h	150	180	210	240	270	300	330	360	390
RATE OF DESCENT	m/s	2.0	2.5	2.9	3.3	3.7	4.1	4.5	4.9	5.3

CHANGE: New chart