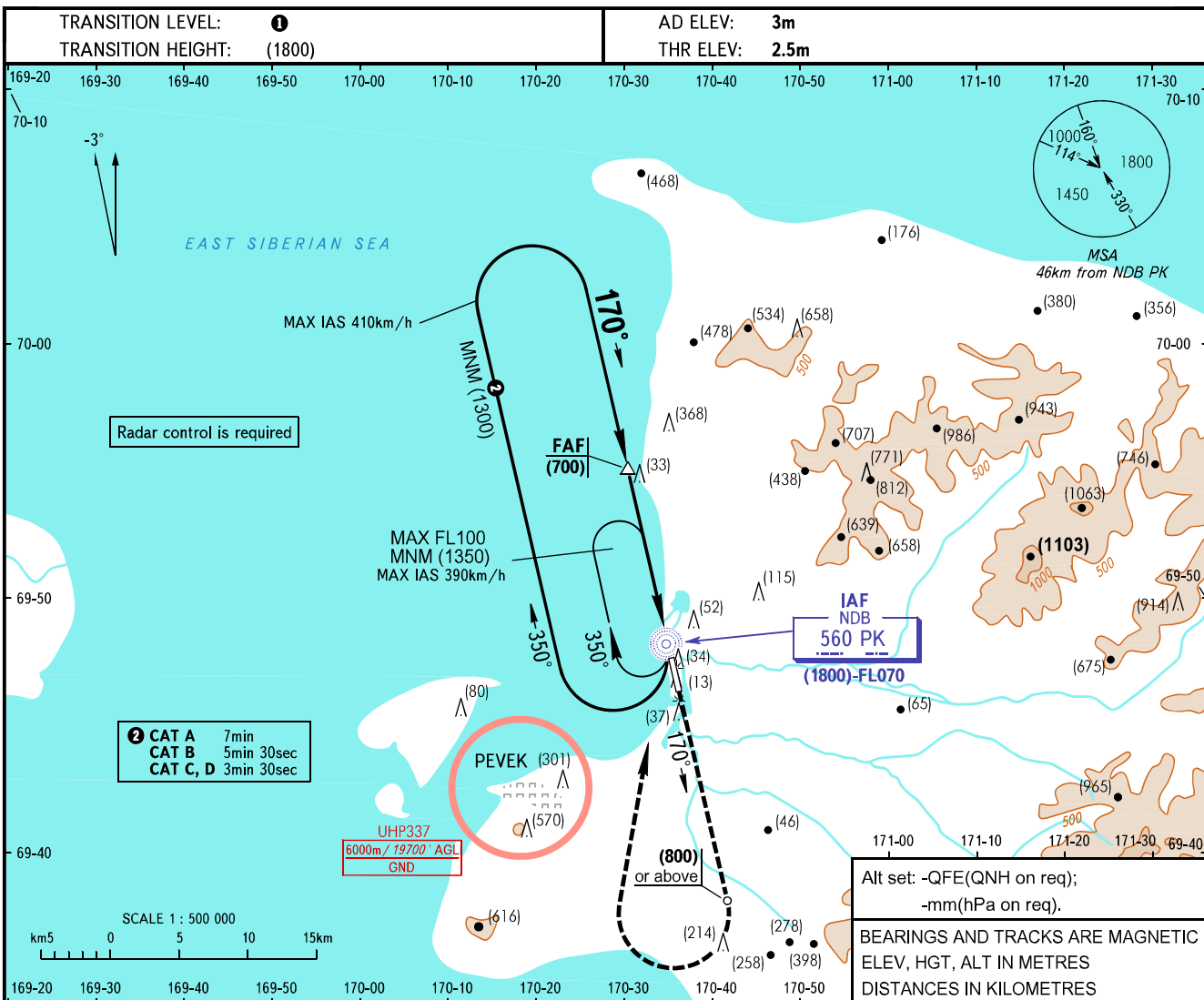


**INSTRUMENT
APPROACH
CHART - ICAO**

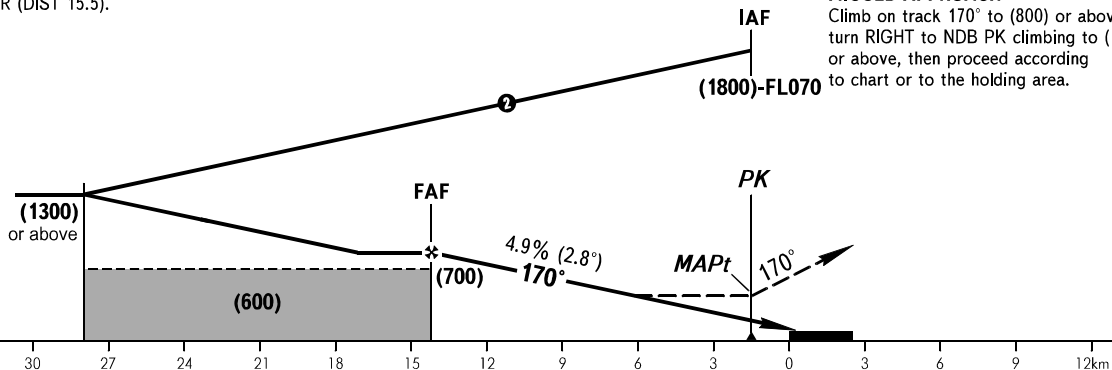
RADAR 124.200

PEVEK, RUSSIA
PEVEK
NDB Z RWY 17



FAF fixed by TAR (DIST 15.5).

MISSED APPROACH
Climb on track 170° to (800) or above, turn RIGHT to NDB PK climbing to (1350) or above, then proceed according to chart or to the holding area.



OCA(H)		A	B	C	D
Straight-in Approach		320(320)	320(320)	320(320)	320(320)
Circling		320(320)	320(320)	360(355)	425(425)

1 TRANSITION LEVEL:
- FL070 when QFE is 760mm mercury column or above;
- FL080 when QFE is 733mm mercury column or above, but less than 760mm mercury column;
- FL090 when QFE is less than 733mm mercury column.

WARNING:
1. Turn before MAPt is PROHIBITED.
2. MAPt at NDB PK. Timing not authorized for defining MAPt.

GROUND SPEED	km/h	150	180	210	240	270	300	330	360	390
RATE OF DESCENT	m/s	2.0	2.5	2.9	3.3	3.7	4.1	4.5	4.9	5.3