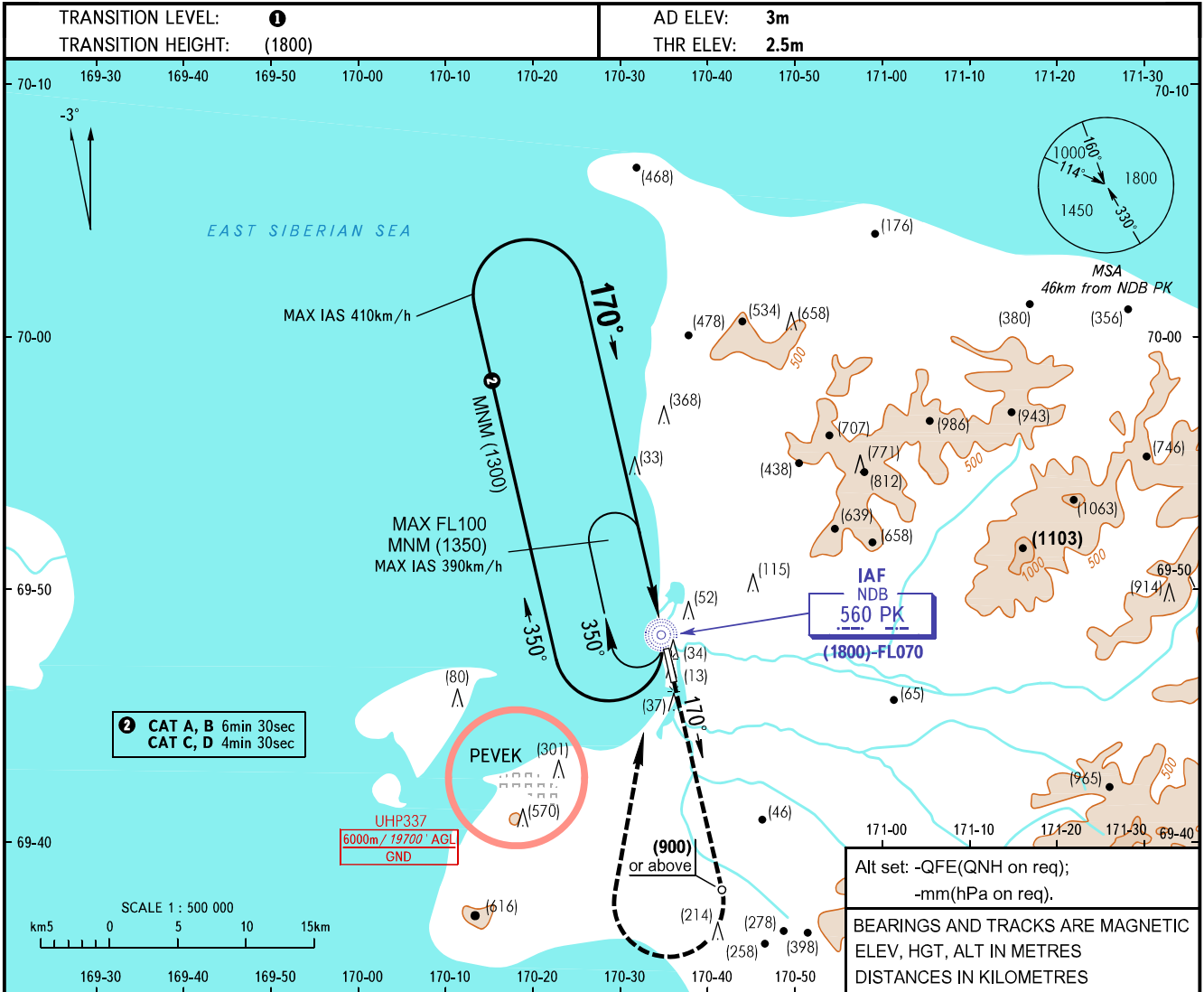


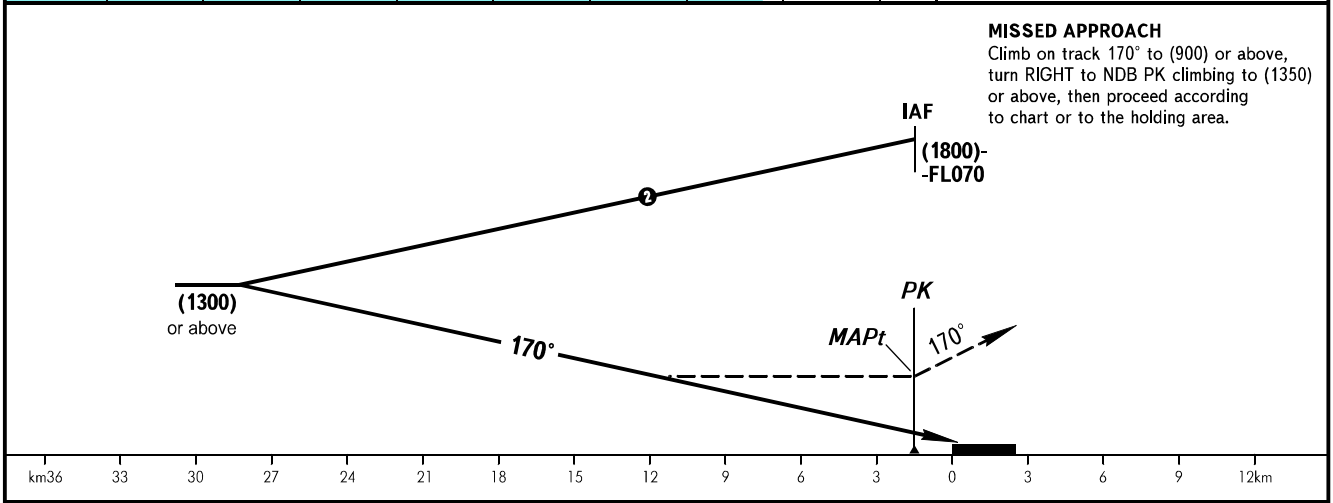
**INSTRUMENT
APPROACH
CHART - ICAO**

RADAR 124.200

PEVEK, RUSSIA
PEVEK
NDB Y RWY 17



MISSED APPROACH
Climb on track 170° to (900) or above, turn RIGHT to NDB PK climbing to (1350) or above, then proceed according to chart or to the holding area.



| OCA(H) | | A | B | C | D |
|----------------------|--|----------|----------|----------|----------|
| Straight-in Approach | | 525(525) | 525(525) | 525(525) | 525(525) |
| | | | | | |
| Circling | | 525(525) | 525(525) | 525(525) | 525(525) |
| | | | | | |

① TRANSITION LEVEL:
- FL070 when QFE is 760mm mercury column or above;
- FL080 when QFE is 733mm mercury column or above, but less than 760mm mercury column;
- FL090 when QFE is less than 733mm mercury column.

WARNING:
1. Turn before MAPt is PROHIBITED.
2. MAPt at NDB PK. Timing not authorized for defining MAPt.

CHANGE: New chart