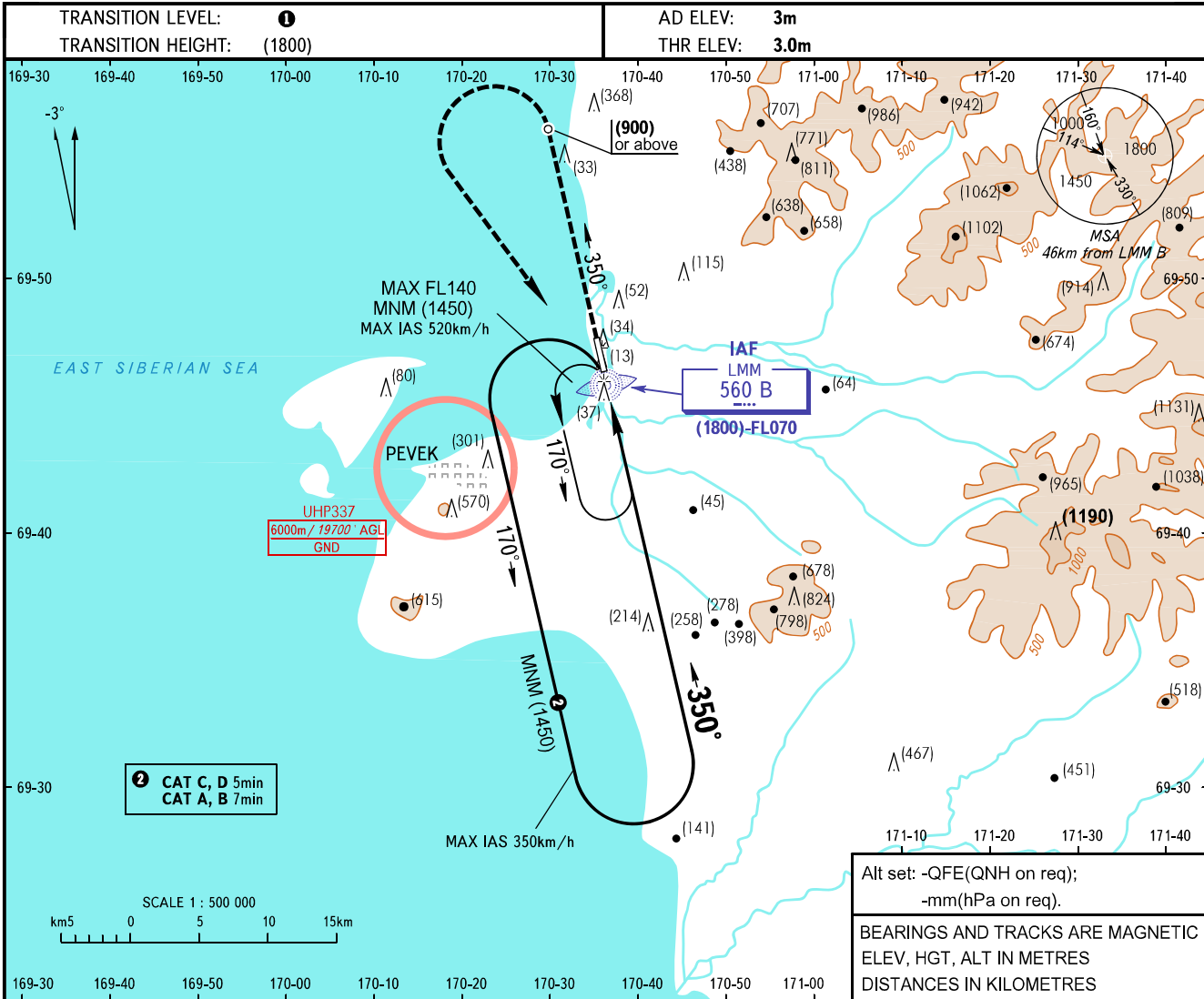


**INSTRUMENT
APPROACH
CHART - ICAO**

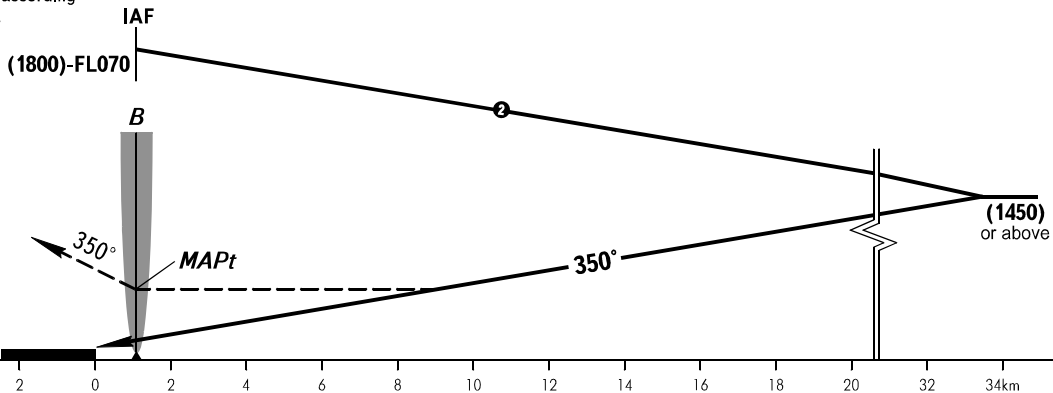
PEVEK, RUSSIA
PEVEK
NDB X RWY 35

RADAR 124.200



MISSED APPROACH

Climb on track 350° to (900) or above, turn LEFT to LMM B climbing to (1450) or above, then proceed according to chart or to the holding area.



OCA(H)		A	B	C	D
Straight-in Approach		425(420)	425(420)	425(420)	425(420)
Circling		425(420)	425(420)	425(420)	425(425)

1 TRANSITION LEVEL:
- FL070 when QFE is 760mm mercury column or above;
- FL080 when QFE is 733mm mercury column or above, but less than 760mm mercury column;
- FL090 when QFE is less than 733mm mercury column.

WARNING:
1. MAPt at LMM B. Timing not authorized for defining MAPt.
2. Turn before MAPt is PROHIBITED.

CHANGE: New chart