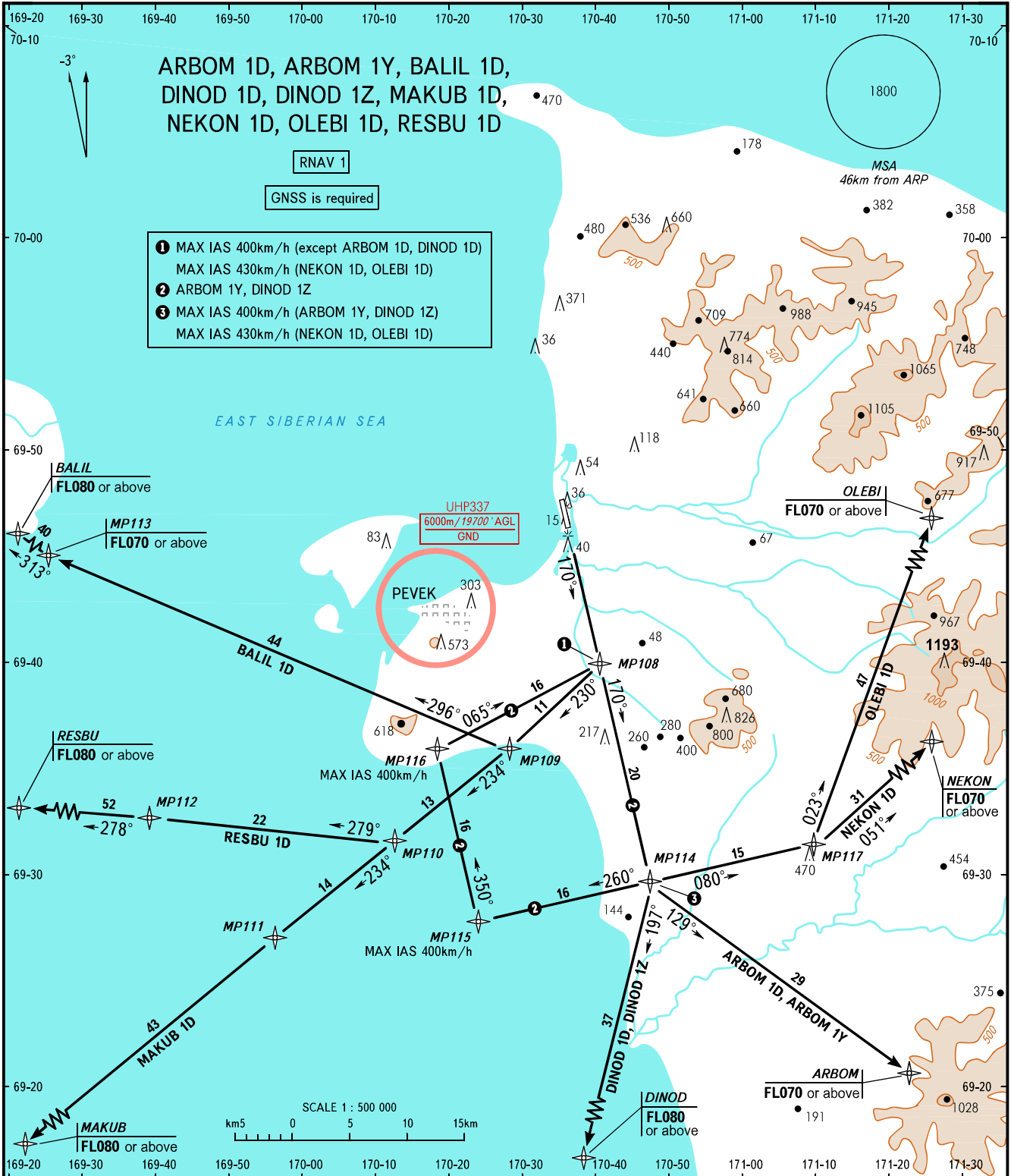


STANDARD DEPARTURE CHART
INSTRUMENT (SID) - ICAO

TRANSITION
HEIGHT : (1800)

PEVEK, RUSSIA
PEVEK
RNAV RWY 17



RADAR 124.200

The minimum climb gradients required due to the airspace structure:
- 3.6% up to FL070 for ARBOM 1D;
- 3.6% up to FL080 for DINOD 1D.

BEARINGS AND TRACKS ARE MAGNETIC
ALTITUDES, HEIGHTS AND ELEVATIONS IN METRES
DISTANCES IN KILOMETRES

Alt set: -QFE(QNH on req);
-mm(hPa on req).

CHANGE: New chart