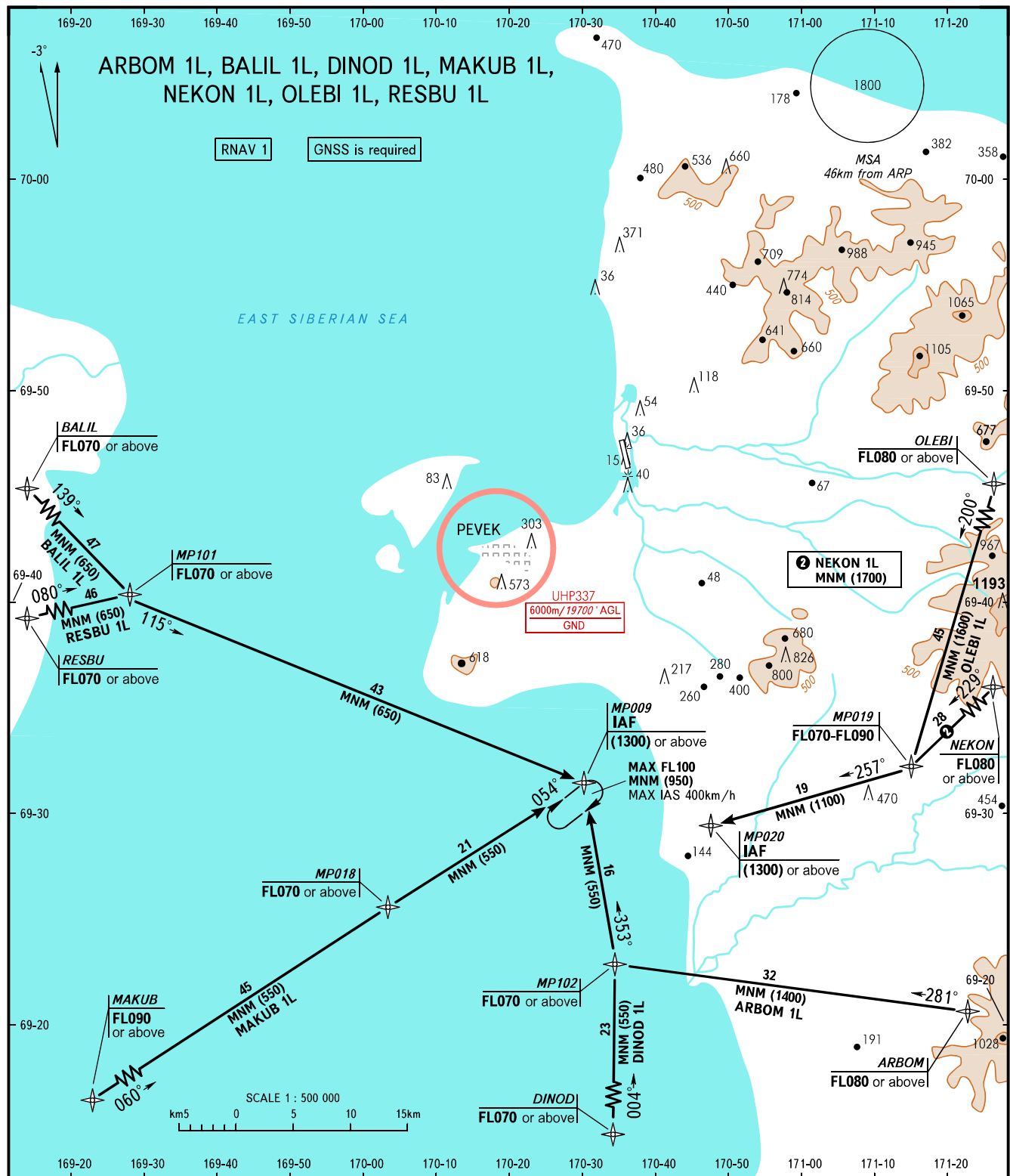


STANDARD ARRIVAL CHART
INSTRUMENT (STAR) - ICAO

TRANSITION
LEVEL: ①

PEVEK, RUSSIA
PEVEK
RNAV RWY 35



<p>RADAR 124.200</p> <p>BEARINGS AND TRACKS ARE MAGNETIC ALTITUDES, HEIGHTS AND ELEVATIONS IN METRES DISTANCES IN KILOMETRES</p>	<p>① TRANSITION LEVEL: - FL070 when QFE is 760mm mercury column or above; - FL080 when QFE is 733mm mercury column or above, but less than 760mm mercury column; - FL090 when QFE is less than 733mm mercury column.</p> <p>Alt set: -QFE(QNH on req); -mm(hPa on req).</p>	<p>AIRAC AMDT 13/23</p> <p>Federal Air Transport Agency</p> <p style="writing-mode: vertical-rl; transform: rotate(180deg);">CHANGE: New chart</p>
--	---	--