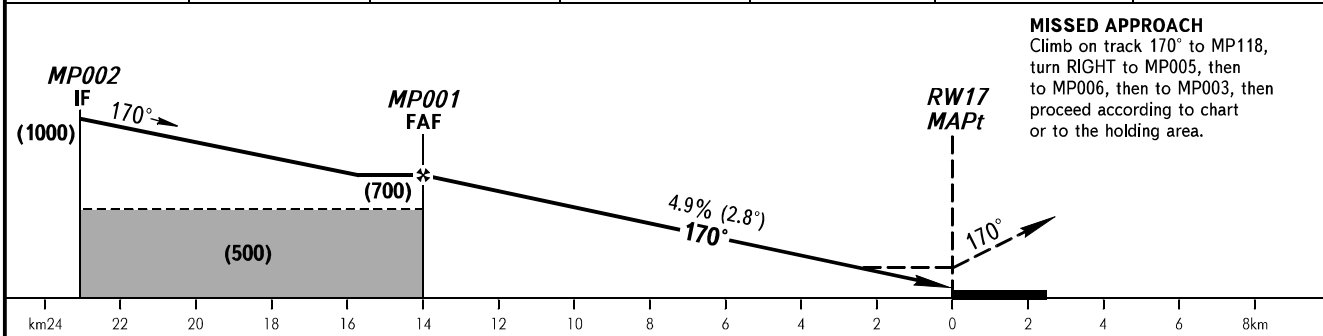
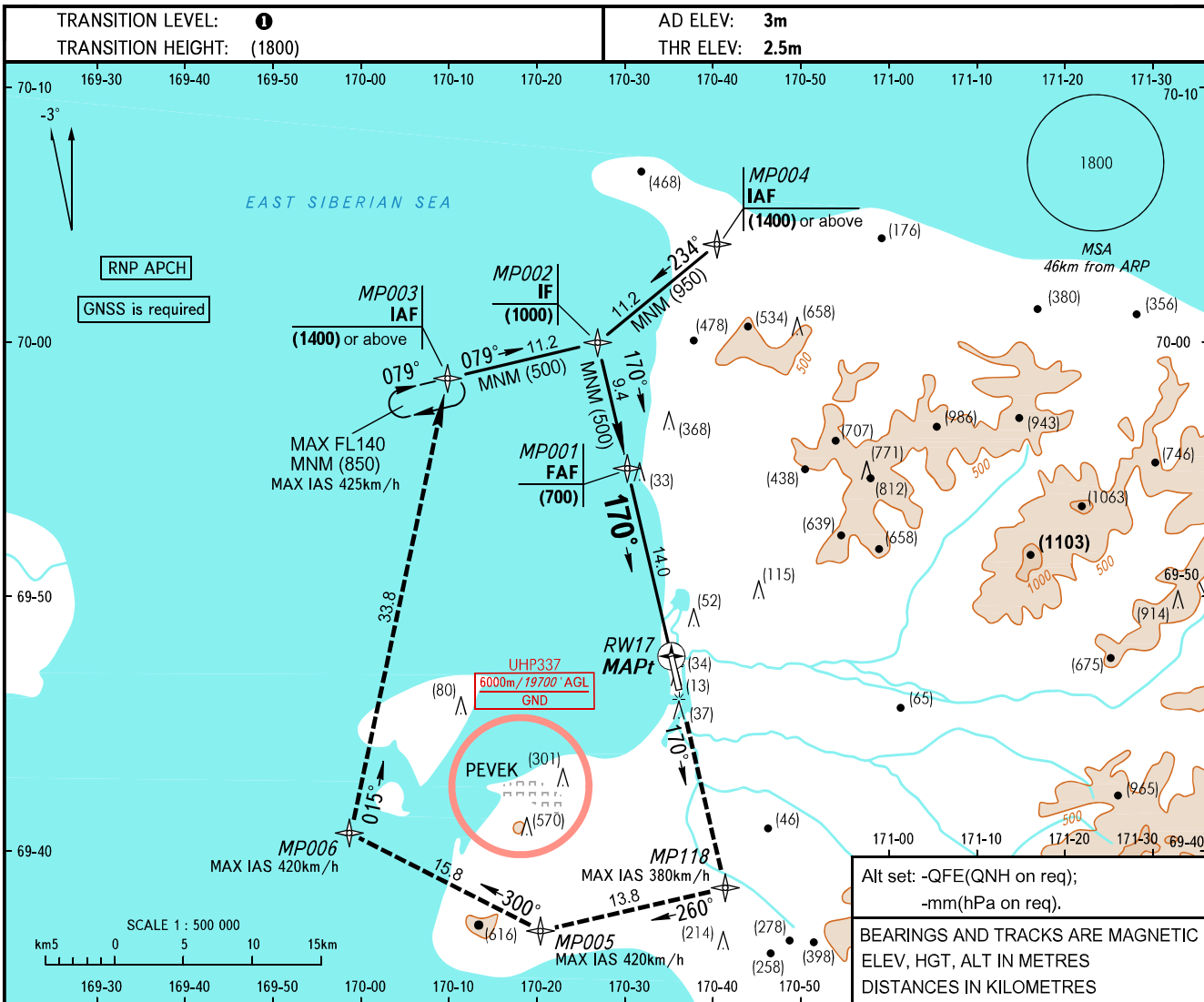


**INSTRUMENT  
APPROACH  
CHART - ICAO**

RADAR 124.200

**PEVEK, RUSSIA**  
PEVEK  
RNP RWY 17



OCA(H)		A	B	C	D	<b>TRANSITION LEVEL:</b> - FL070 when QFE is 760mm mercury column or above; - FL080 when QFE is 733mm mercury column or above, but less than 760mm mercury column; - FL090 when QFE is less than 733mm mercury column.					
Straight-in Approach	LNAV	115(110)	115(110)	115(110)	115(110)	<b>WARNING</b> MAPt at RW17. Timing not authorized for defining MAPt.					
	Circling	145(145)	155(155)	360(355)	425(425)						
GROUND SPEED		km/h	150	180	210	240	270	300	330	360	390
RATE OF DESCENT		m/s	2.0	2.5	2.9	3.3	3.7	4.1	4.5	4.9	5.3

CHANGE: New chart