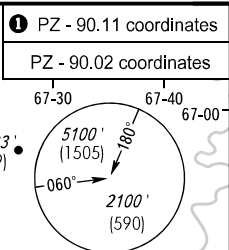
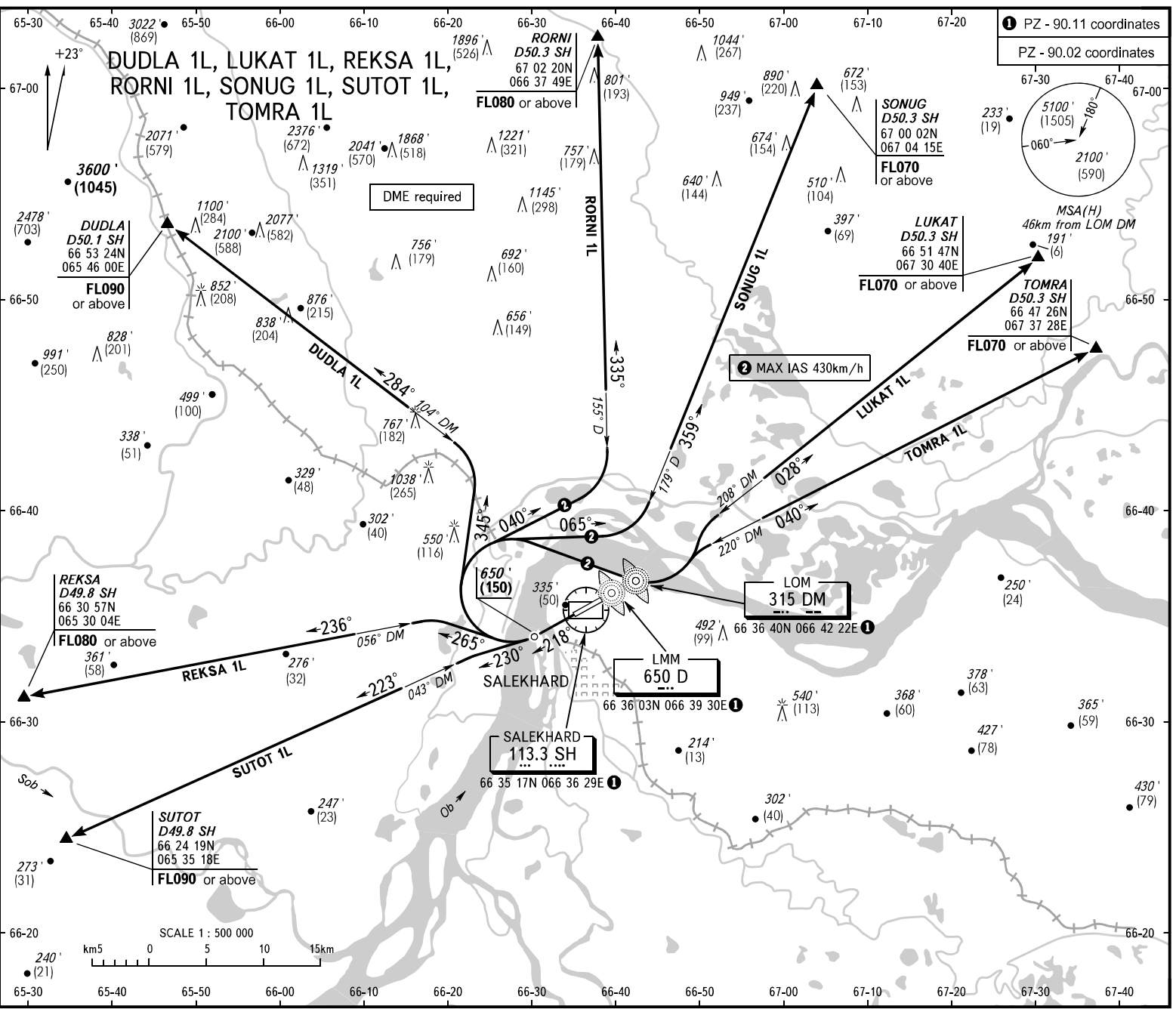


STANDARD DEPARTURE CHART  
INSTRUMENT (SID) - ICAO

TRANSITION ALT: 5100'

SALEKHARD, RUSSIA  
SALEKHARD  
RWY 22



START 118 600  
KRUG 120 800

BEARINGS AND TRACKS ARE MAGNETIC  
ALTITUDES IN FEET  
ELEVATIONS IN FEET AND METRES  
HEIGHTS IN METRES  
DISTANCES IN KILOMETRES

Federal Air Transport Agency

All set: -QNH/QNH on req.;  
-hPa (mm on req.)

NOTE  
Turn before DER is PROHIBITED.  
WARNING:  
1. The minimum climb gradients required due to the airspace structure:  
DUDLA 1L - 4.8% up to FL090;  
REKSA 1L - 5.1% up to FL080;  
RORNI 1L - 3.5% up to FL080;  
SUTOT 1L - 5.5% up to FL090.  
2. If unable to maintain the minimum climb gradient, advise ATS unit.

AIRCAC AMDT 04/23