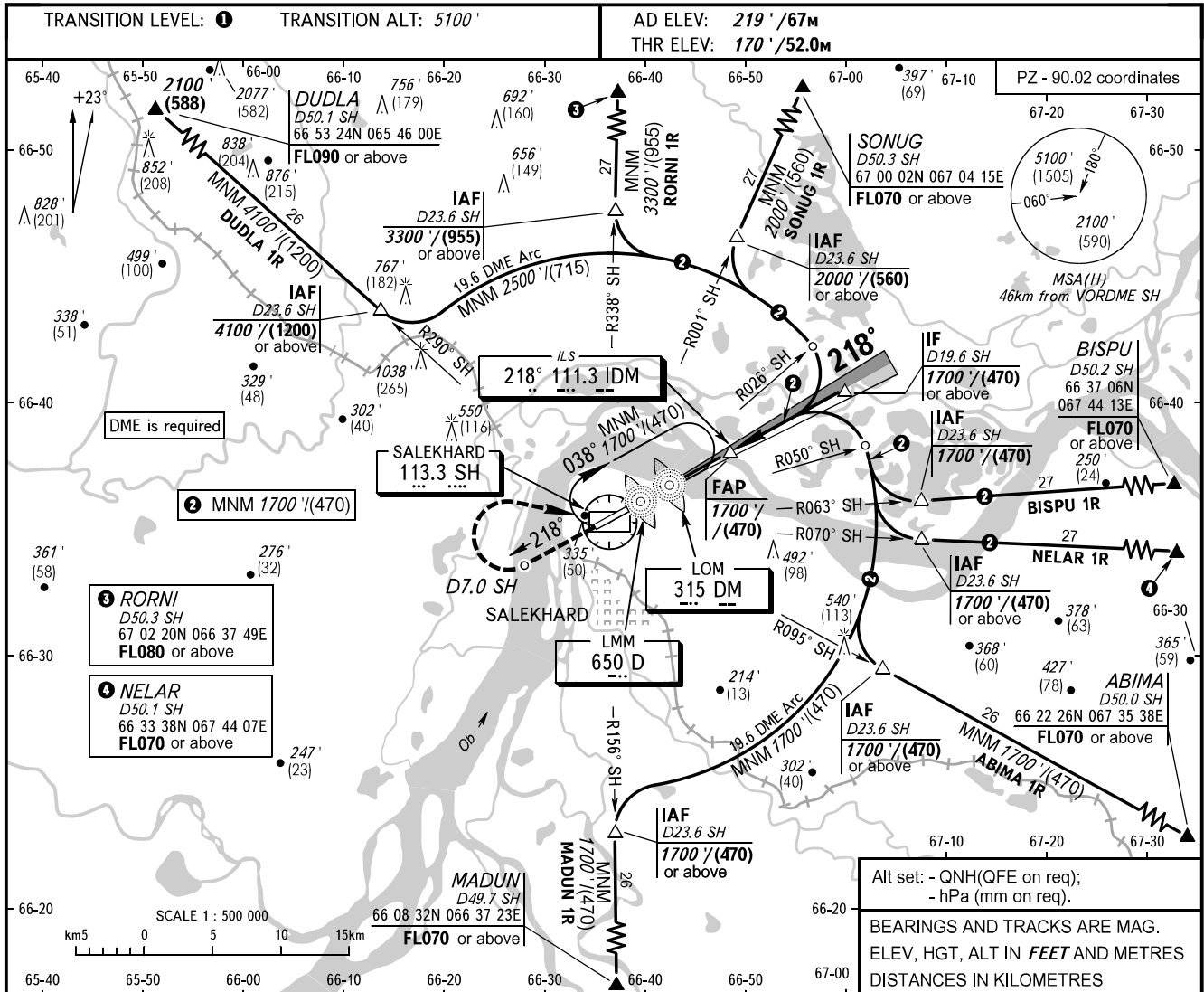


**INSTRUMENT
APPROACH
CHART - ICAO**

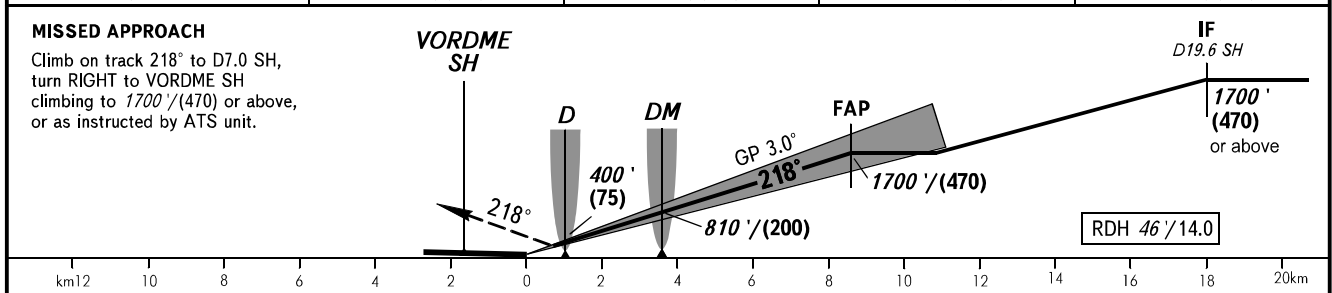
KRUG **120.800**
START **118.600**

SALEKHARD, RUSSIA
SALEKHARD
ILS Z CAT I RWY 22



Alt set: - QNH(QFE on req);
- hPa (mm on req).
BEARINGS AND TRACKS ARE MAG.
ELEV, HGT, ALT IN FEET AND METRES
DISTANCES IN KILOMETRES

DME SH	4.0	6.0	8.0	10.0
ALTITUDE/HEIGHT	630'/(145)	970'/(245)	1320'/(355)	1660'/(455)



OCA(H)		A	B	C	D								
Straight-in Approach	CAT I	366' (196') (60)	376' (206') (65)	386' (216') (70)	396' (226') (70)								
	Circling	660' (440') (135)	720' (500') (155)	820' (600') (185)	910' (690') (215)								
GROUND SPEED		km/h	150	180	210	240	270	300	330	360	390	420	450
RATE OF DESCENT		m/s	2.2	2.6	3.0	3.5	3.9	4.3	4.8	5.2	5.6	6.1	6.5
		ft/min	427	512	597	682	768	853	938	1024	1109	1194	1280

1 TRANSITION LEVEL:
- FL070 when QNH is 984 hPa (738mm mercury column) or above;
- FL080 when QNH is 948 hPa (711mm mercury column) or above,
but less than 984 hPa (738mm mercury column);
- FL090 when QNH is less than 948 hPa (711mm mercury column).
WARNING
Visual manoeuvring in sector 047°-210° is PROHIBITED.