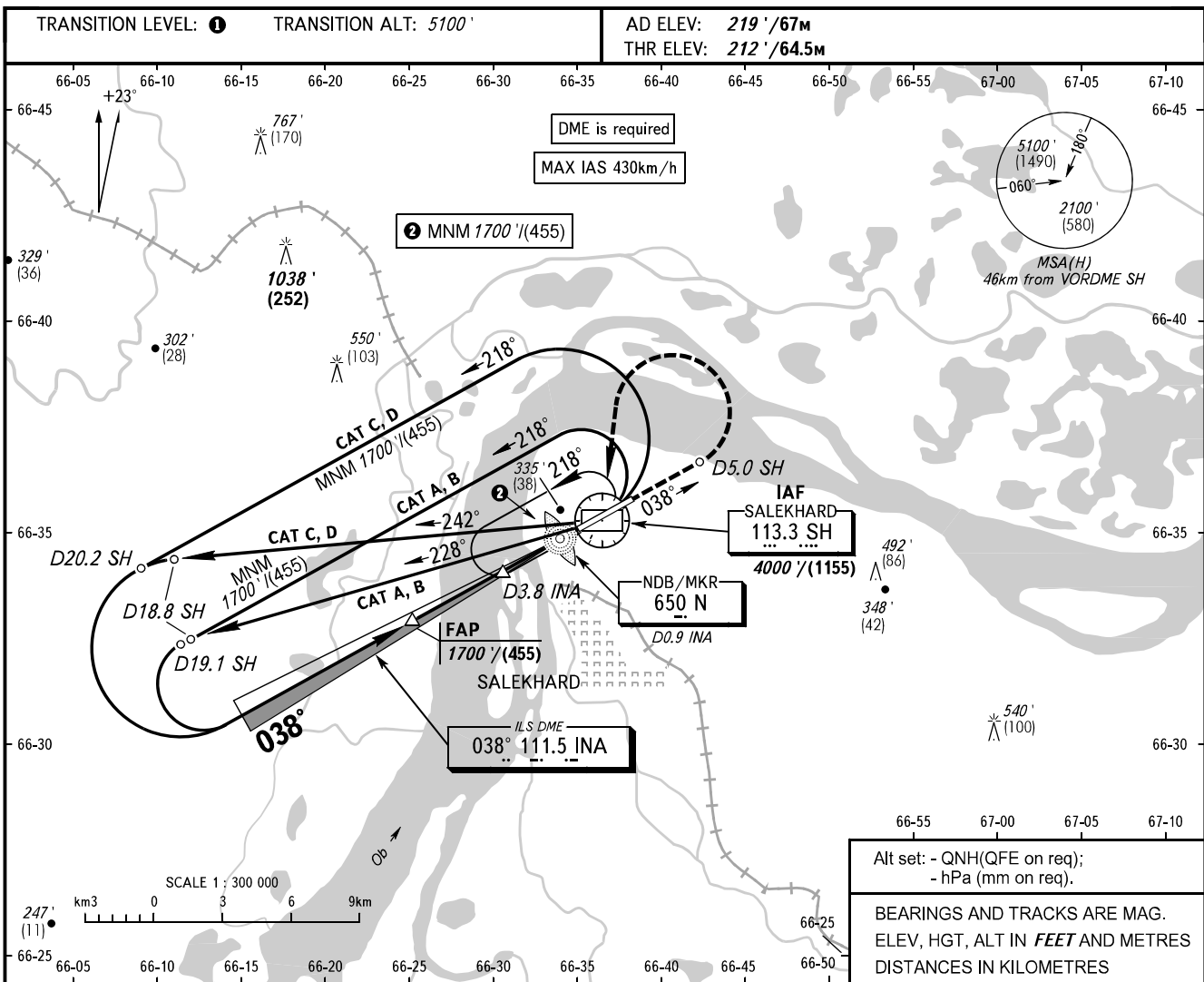


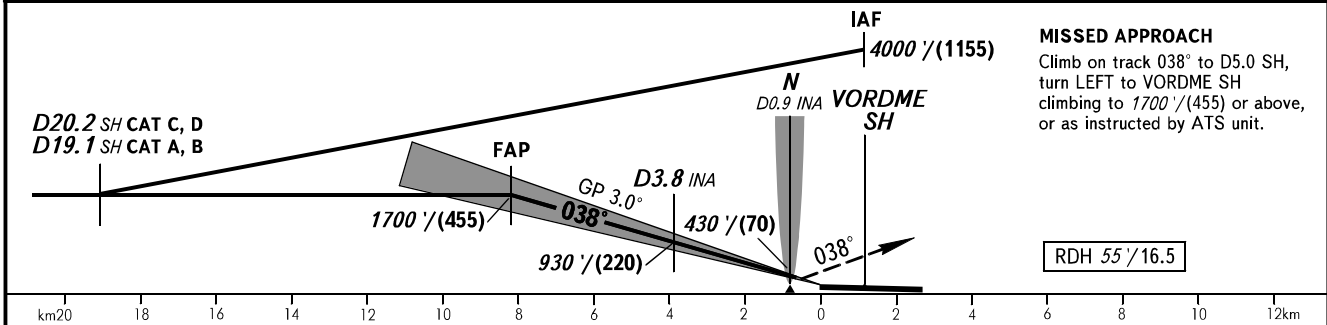
**INSTRUMENT
APPROACH
CHART - ICAO**

**SALEKHARD, RUSSIA
SALEKHARD
ILS Y CAT I RWY 04**

KRUG **120.800**
START **118.600**



DME INA	8.0	6.0	4.0	2.0
ALTITUDE/HEIGHT	1650'/(440)	1300'/(335)	960'/(230)	620'/(125)



OCA(H)		A	B	C	D
Straight-in Approach	CAT I	429' (217') (70)	439' (227') (70)	449' (237') (75)	459' (247') (80)
Circling		660' (440') (135)	720' (500') (155)	820' (600') (185)	910' (690') (215)

1 TRANSITION LEVEL:
- FL070 when QNH is 984 hPa (738mm mercury column) or above;
- FL080 when QNH is 948 hPa (711mm mercury column) or above,
but less than 984 hPa (738mm mercury column);
- FL090 when QNH is less than 948 hPa (711mm mercury column).

WARNING
Visual manoeuvring in sector 047°-210° is PROHIBITED.
Zero range of DME INA is indicated at RWY 04 THR.

GROUND SPEED	km/h	150	180	210	240	270	300	330	360	390	420	450
RATE OF DESCENT	m/s	2.2	2.6	3.1	3.5	3.9	4.4	4.8	5.2	5.7	6.1	6.6
	ft/min	433	512	610	689	768	866	945	1024	1122	1201	1299

CHANGE: New chart