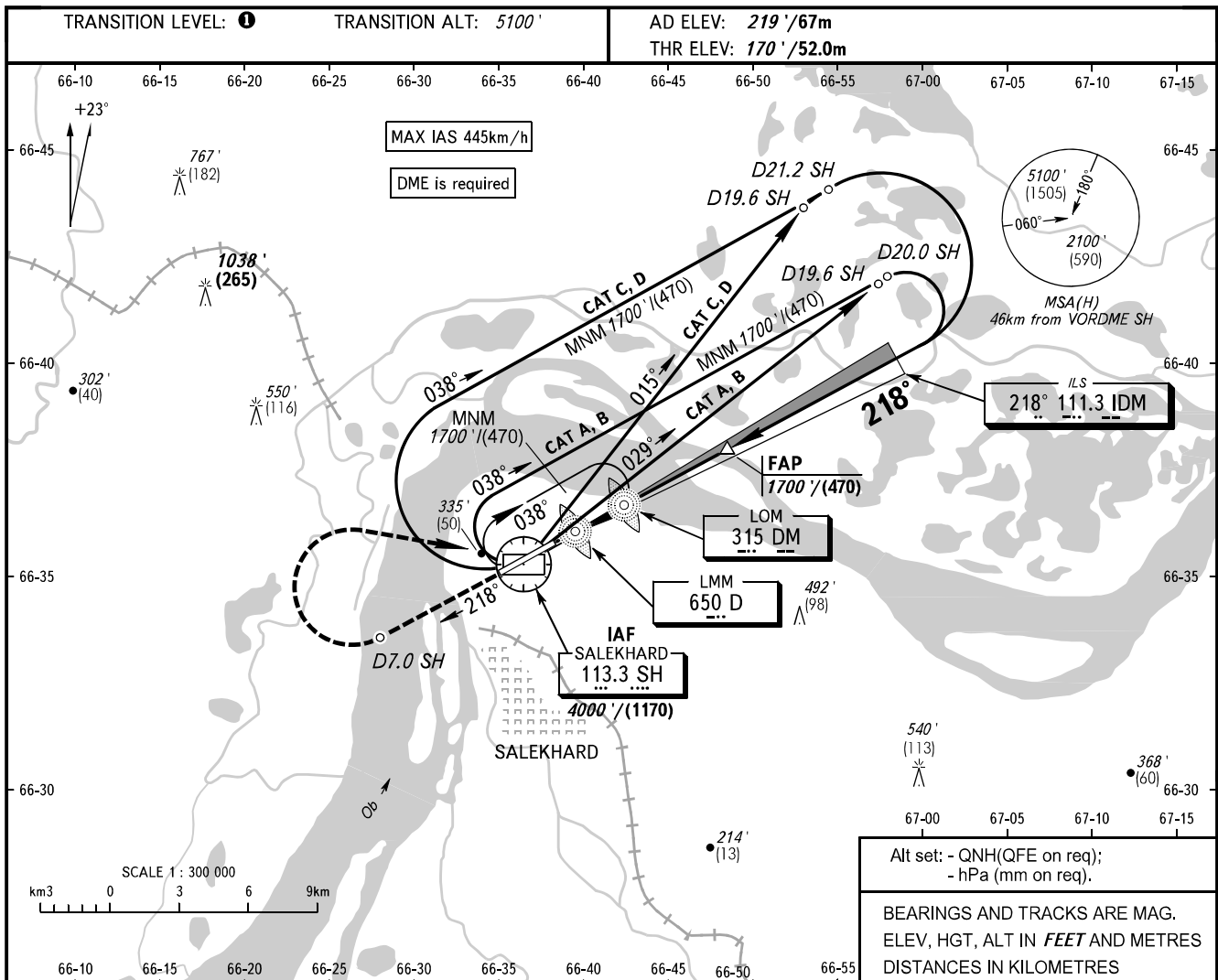


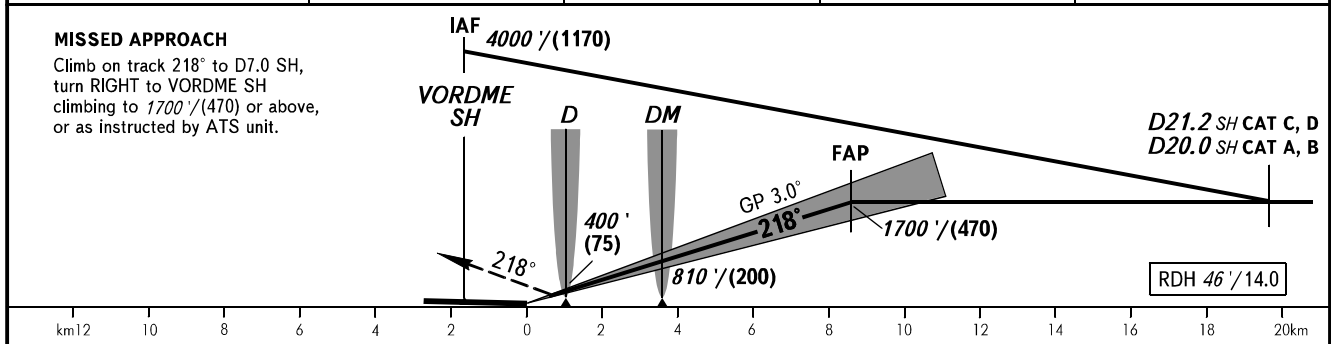
**INSTRUMENT
APPROACH
CHART - ICAO**

KRUG	120.800
START	118.600

**SALEKHARD, RUSSIA
SALEKHARD
ILS Y CAT I RWY 22**



DME SH	4.0	6.0	8.0	10.0
ALTITUDE/HEIGHT	630' / (145)	970' / (245)	1320' / (355)	1660' / (455)



OCA(H)		A	B	C	D
Straight-in Approach	CAT I	366' (196') (60)	376' (206') (65)	386' (216') (70)	396' (226') (70)
	Circling	660' (440') (135)	720' (500') (155)	820' (600') (185)	910' (690') (215)

① TRANSITION LEVEL:
 - FL070 when QNH is 984 hPa (738mm mercury column) or above;
 - FL080 when QNH is 948 hPa (711mm mercury column) or above, but less than 984 hPa (738mm mercury column);
 - FL090 when QNH is less than 948 hPa (711mm mercury column).
WARNING
 Visual manoeuvring in sector 047°-210° is PROHIBITED.

GROUND SPEED	km/h	150	180	210	240	270	300	330	360	390	420	450
RATE OF DESCENT	m/s	2.2	2.6	3.1	3.5	3.9	4.4	4.8	5.2	5.7	6.1	6.6
	ft/min	433	512	610	689	768	866	945	1024	1122	1201	1299