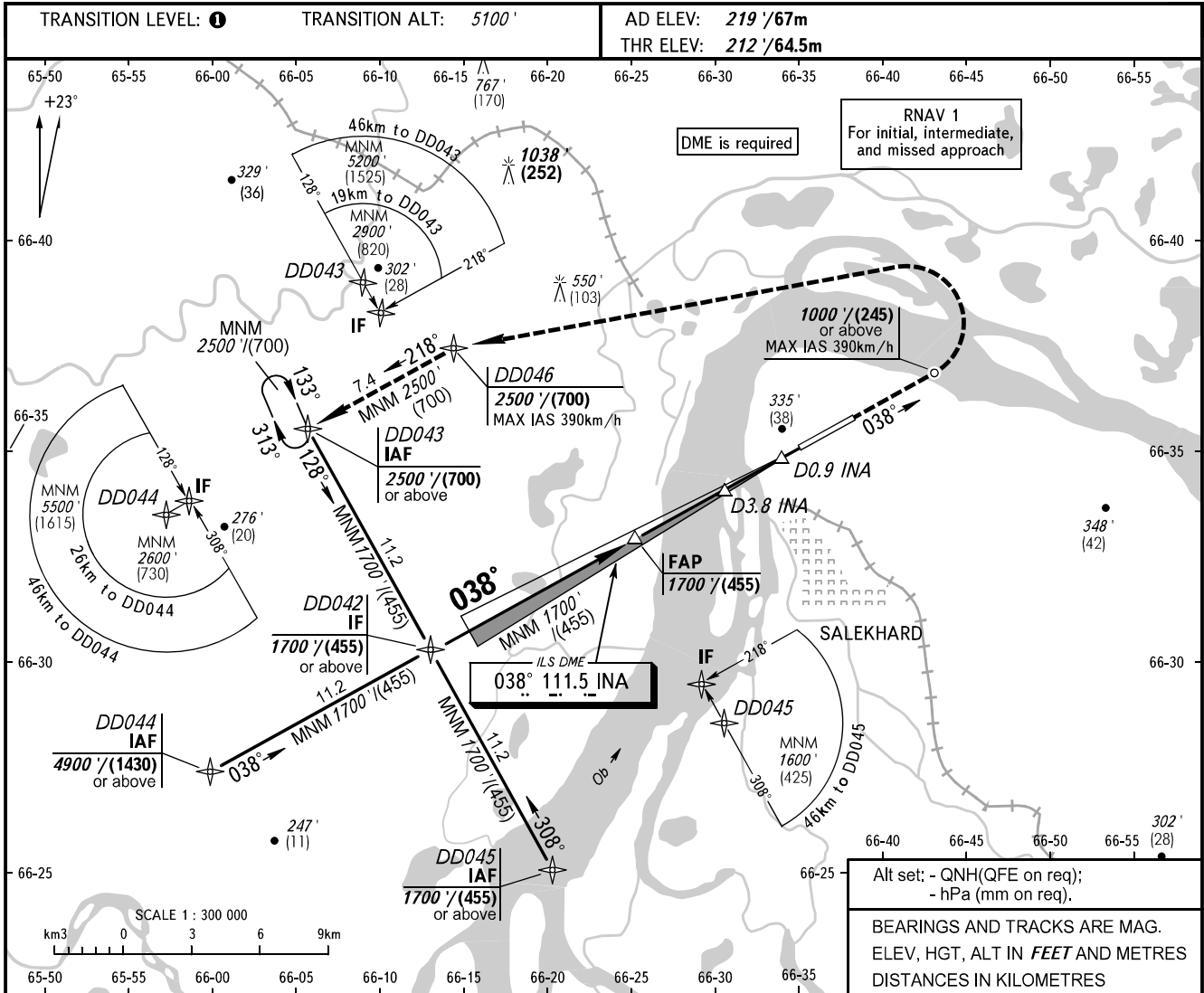


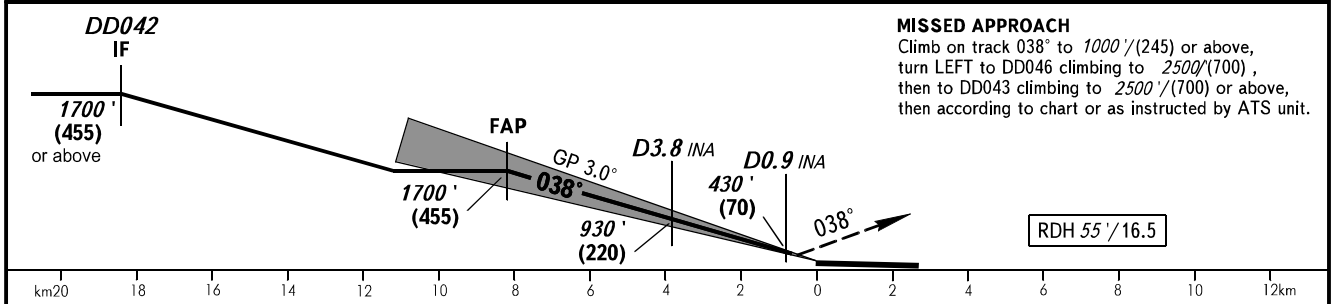
**INSTRUMENT  
APPROACH  
CHART - ICAO**

KRUG	120.800
START	118.600

**SALEKHARD, RUSSIA**  
SALEKHARD  
ILS W CAT I RWY 04



DME INA	8.0	6.0	4.0	2.0
ALTITUDE/HEIGHT	1650' / (440)	1300' / (335)	960' / (230)	620' / (125)



OCA(H)		A	B	C	D
Straight-in Approach	CAT I	429' (217') (70)	439' (227') (70)	449' (237') (75)	459' (247') (80)
Circling		660' (440') (135)	720' (500') (155)	820' (600') (185)	910' (690') (215)

**TRANSITION LEVEL:**  
 - FL070 when QNH is 984 hPa (738mm mercury column) or above;  
 - FL080 when QNH is 948 hPa (711mm mercury column) or above, but less than 984 hPa (738mm mercury column);  
 - FL090 when QNH is less than 948 hPa (711mm mercury column).

**WARNING**  
 Visual manoeuvring in sector 047°-210° is PROHIBITED.  
 Zero range of DME INA is indicated at RWY 04 THR.

GROUND SPEED	km/h											
	150	180	210	240	270	300	330	360	390	420	450	
RATE OF DESCENT	m/s											
	2.2	2.6	3.1	3.5	3.9	4.4	4.8	5.2	5.7	6.1	6.5	
RATE OF DESCENT	ft/min											
	433	512	610	689	768	866	945	1024	1122	1201	1299	

CHANGE: New chart