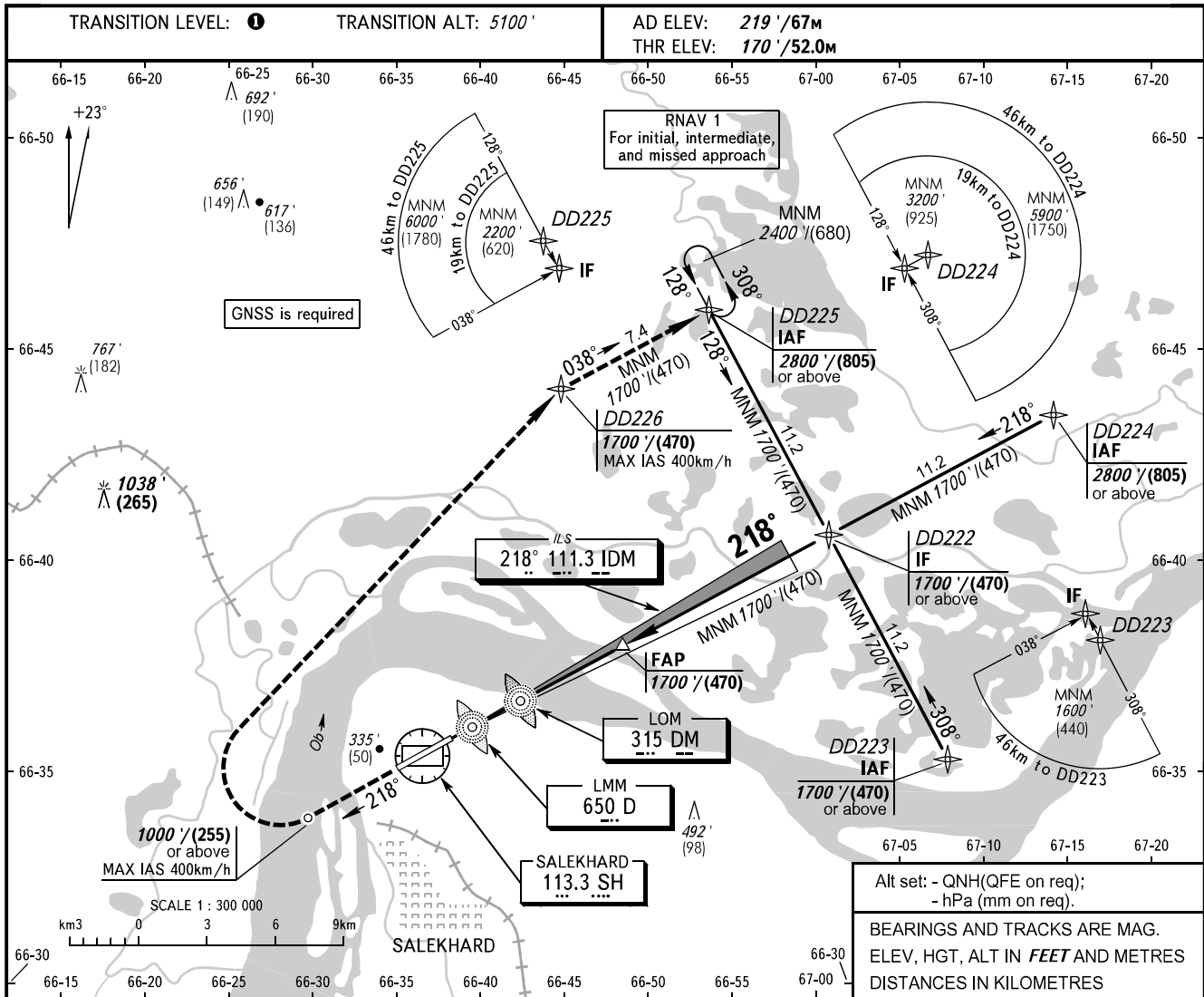


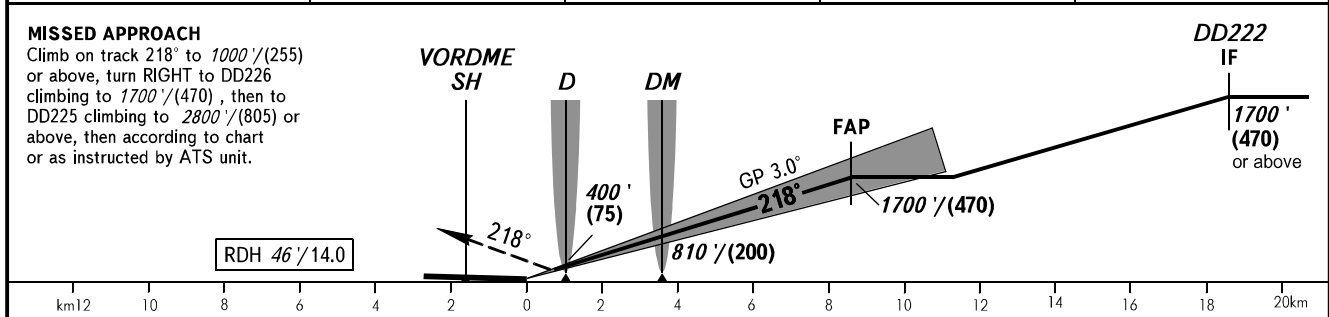
**INSTRUMENT  
APPROACH  
CHART - ICAO**

KRUG **120.800**  
START **118.600**

**SALEKHARD, RUSSIA**  
SALEKHARD  
ILS W CAT I RWY 22



DME SH	3.0	5.0	7.0	9.0
ALTITUDE/HEIGHT	590'/(130)	930'/(235)	1270'/(340)	1610'/(440)



OCA(H)		A	B	C	D							
Straight-in Approach	CAT I	366' (196') (60)	376' (206') (65)	386' (216') (70)	396' (226') (70)							
	Circling	660' (440') (135)	720' (500') (155)	820' (600') (185)	910' (690') (215)							
GROUND SPEED	km/h	150	180	210	240	270	300	330	360	390	420	450
RATE OF DESCENT	m/s	2.2	2.6	3.1	3.5	3.9	4.4	4.8	5.2	5.7	6.1	6.6
	ft/min	433	512	610	689	768	866	945	1024	1122	1201	1299

**TRANSITION LEVEL:**  
 - FL070 when QNH is 984 hPa (738mm mercury column) or above;  
 - FL080 when QNH is 948 hPa (711mm mercury column) or above, but less than 984 hPa (738mm mercury column);  
 - FL090 when QNH is less than 948 hPa (711mm mercury column).

**WARNING**  
 Visual manoeuvring in sector 047°-210° is PROHIBITED.