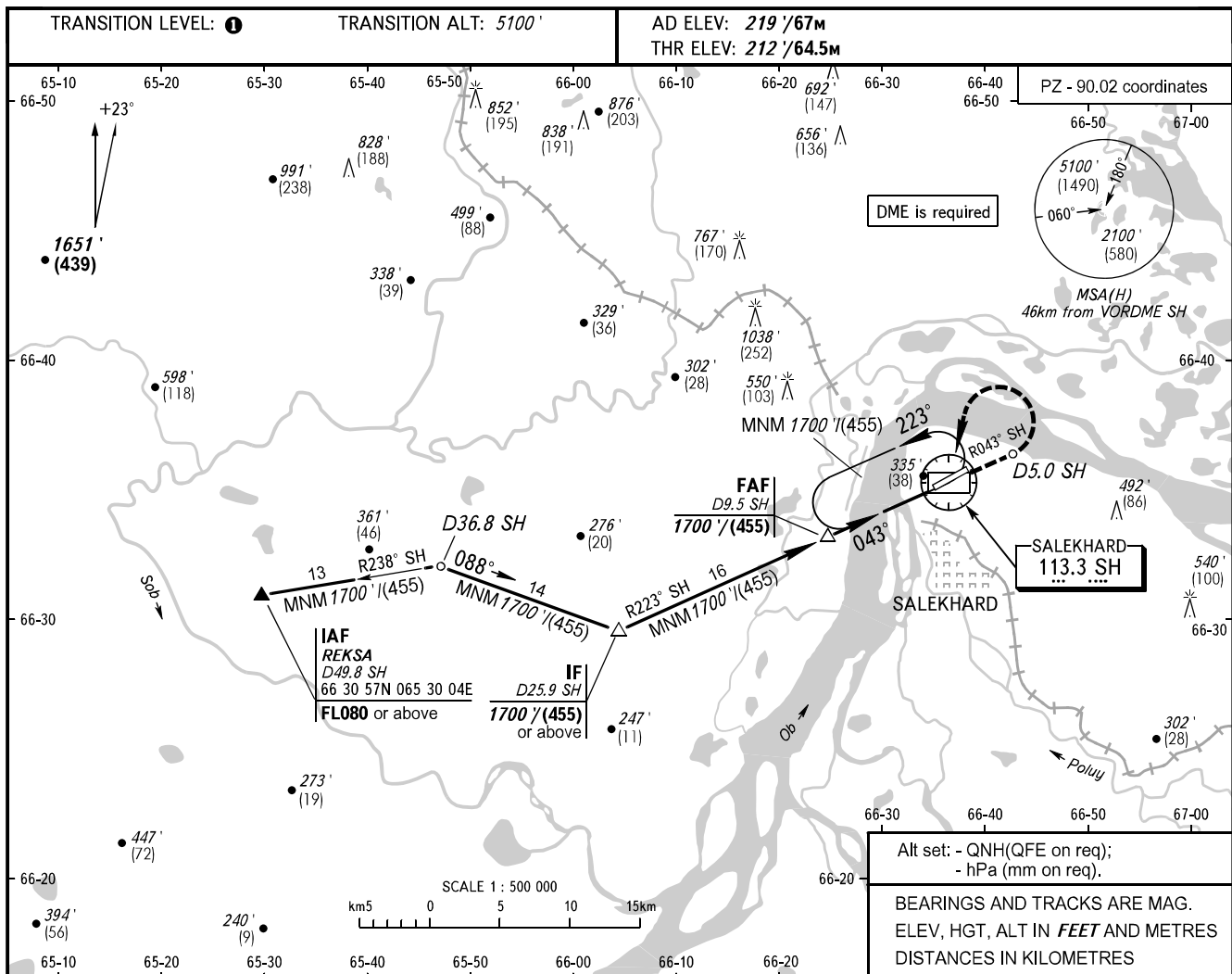


**INSTRUMENT
APPROACH
CHART - ICAO**

KRUG	120.800
START	118.600

SALEKHARD, RUSSIA
SALEKHARD
VOR Y RWY 04

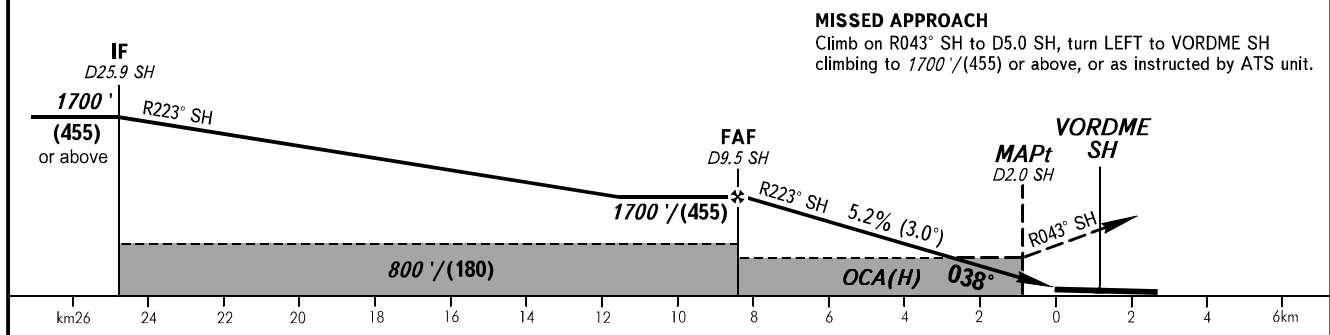


DME is required

Alt set: - QNH(QFE on req);
- hPa (mm on req).

BEARINGS AND TRACKS ARE MAG.
ELEV, HGT, ALT IN FEET AND METRES
DISTANCES IN KILOMETRES

DME SH	9.0	7.0	5.0	3.0
ALTITUDE/HEIGHT	1610'/(430)	1270'/(325)	930'/(220)	590'/(120)



MISSED APPROACH
Climb on R043° SH to D5.0 SH, turn LEFT to VORDME SH climbing to 1700'/(455) or above, or as instructed by ATS unit.

OCA(H)	A	B	C	D
Straight-in Approach	580' (370') (115)	580' (370') (115)	580' (370') (115)	580' (370') (115)
Circling	660' (440') (135)	720' (500') (155)	820' (600') (185)	910' (690') (215)

TRANSITION LEVEL:
- FL070 when QNH is 984 hPa (738mm mercury column) or above;
- FL080 when QNH is 948 hPa (711mm mercury column) or above, but less than 984 hPa (738mm mercury column);
- FL090 when QNH is less than 948 hPa (711mm mercury column).

WARNING
Visual manoeuvring in sector 047°-210° is PROHIBITED.
Final approach track is offset by 5° from the RWY centre line.

GROUND SPEED	km/h	150	180	210	240	270	300	330	360	390	420	450
	m/s	2.2	2.6	3.1	3.5	3.9	4.4	4.8	5.2	5.7	6.1	6.6
RATE OF DESCENT	ft/min	433	512	610	689	768	866	945	1024	1122	1201	1299

CHANGE: New chart