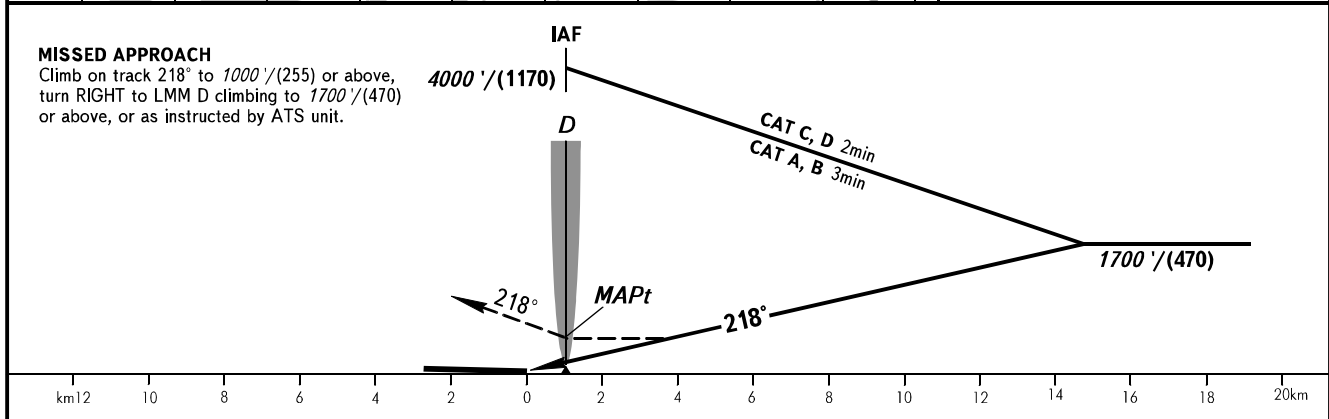
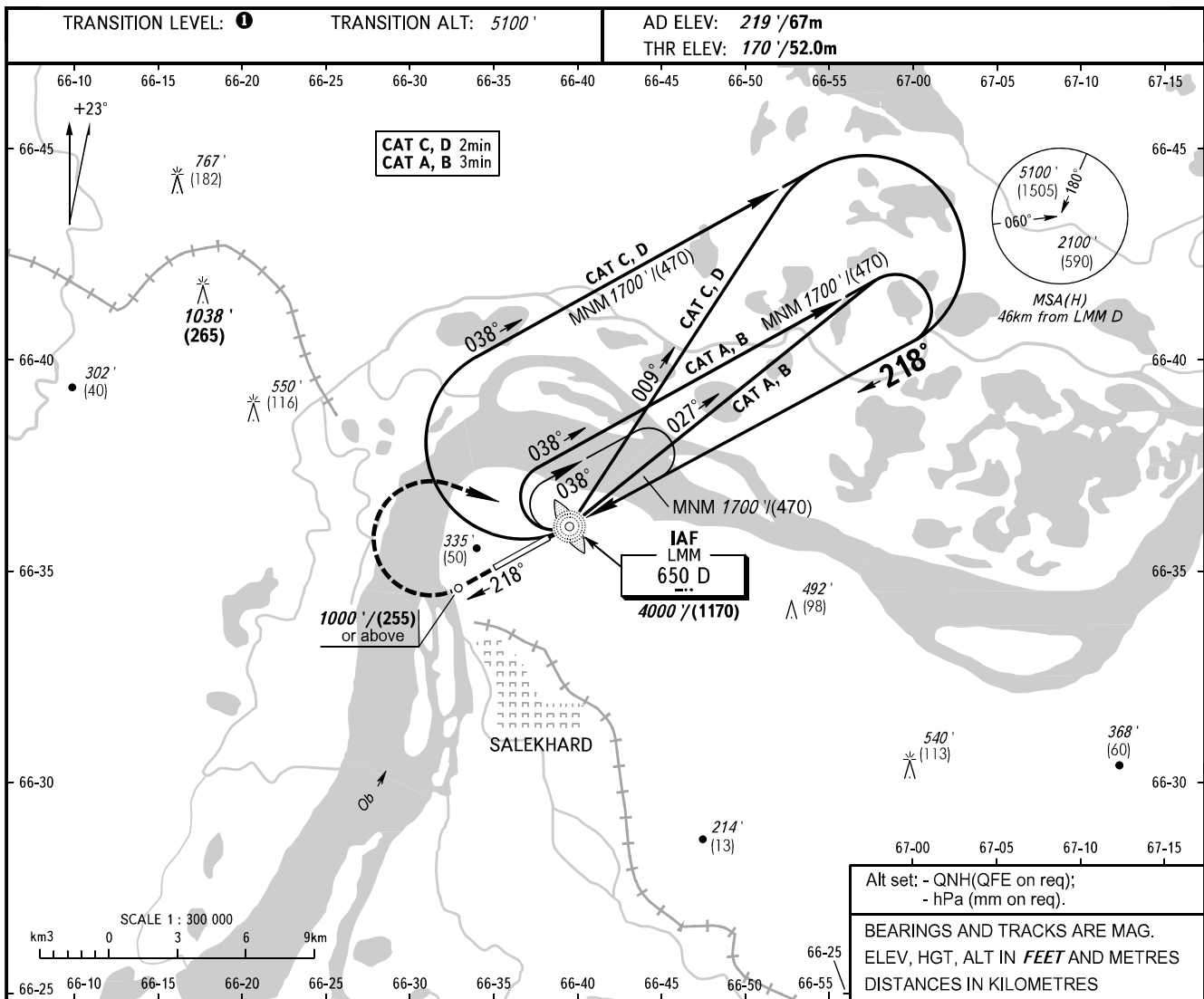


**INSTRUMENT  
APPROACH  
CHART - ICAO**

|       |         |
|-------|---------|
| KRUG  | 120.800 |
| START | 118.600 |

**SALEKHARD, RUSSIA**  
SALEKHARD  
NDB Y RWY 22



| OCA(H)               |  | A                   | B                   | C                   | D                   |
|----------------------|--|---------------------|---------------------|---------------------|---------------------|
| Straight-in Approach |  | 510' (330') / (105) | 510' (330') / (105) | 510' (330') / (105) | 510' (330') / (105) |
|                      |  |                     |                     |                     |                     |
| Circling             |  | 660' (440') / (135) | 720' (500') / (155) | 820' (600') / (185) | 910' (690') / (215) |

**① TRANSITION LEVEL:**  
 - FL070 when QNH is 984 hPa (738mm mercury column) or above;  
 - FL080 when QNH is 948 hPa (711mm mercury column) or above, but less than 984 hPa (738mm mercury column);  
 - FL090 when QNH is less than 948 hPa (711mm mercury column).

**WARNING**  
 Visual manoeuvring in sector 047°-210° is PROHIBITED.