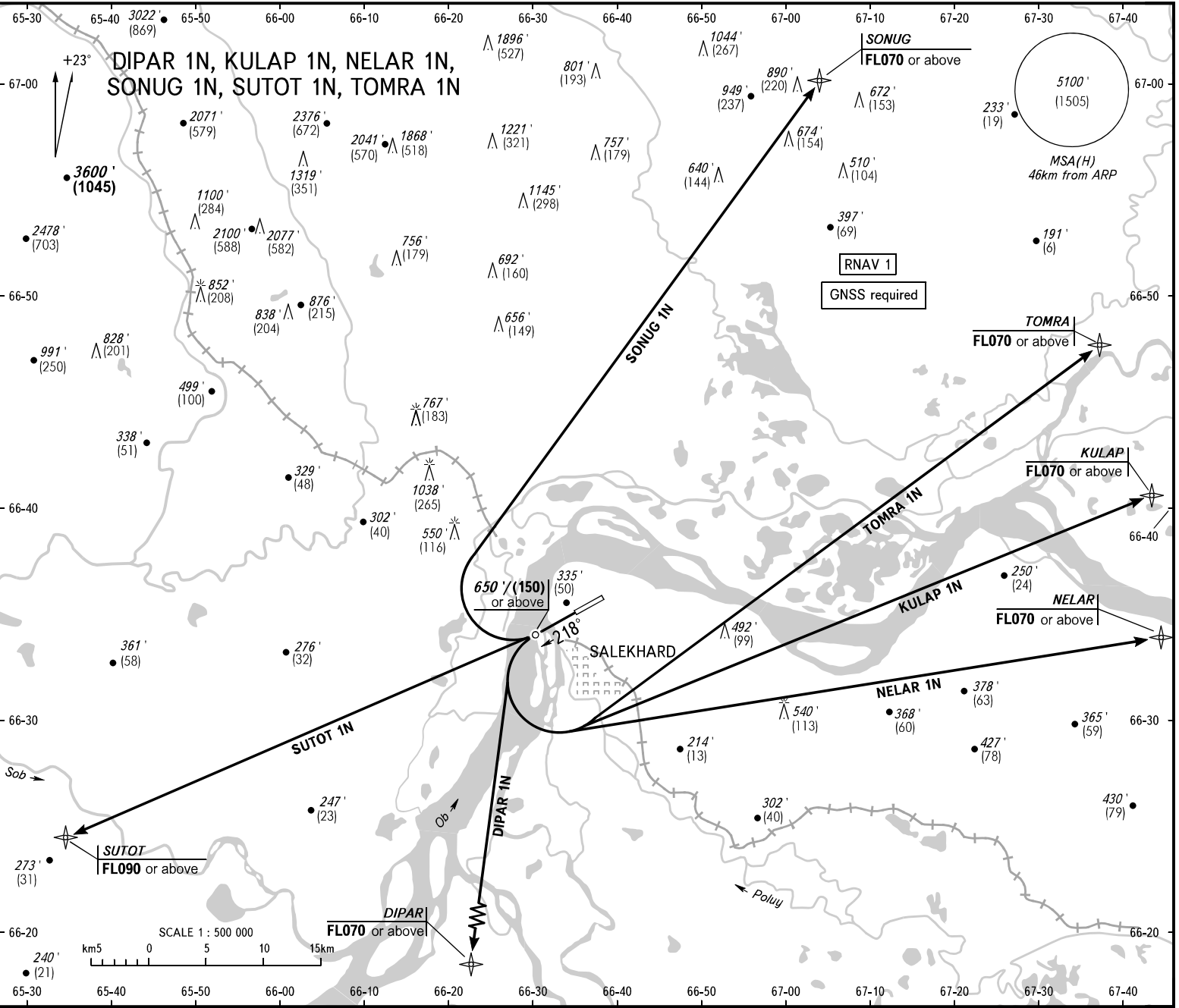


STANDARD DEPARTURE CHART
INSTRUMENT (SID) - ICAO

TRANSITION ALT: 5100'

SALEKHHARD, RUSSIA
SALEKHHARD
RNAV RWY 22



DIPAR 1N, KULAP 1N, NELAR 1N,
SONUG 1N, SUTOT 1N, TOMRA 1N

START
STRUG
118,600
120,800

BEARINGS AND TRACKS ARE MAGNETIC
ALTITUDES IN FEET
ELEVATIONS IN FEET AND METRES
HEIGHTS IN METRES
DISTANCES IN KILOMETRES

All set: -QNH/QNH on req);
-hPa (mm on req);

WARNING:
1. The minimum climb gradients required due to the airspace structure:
- DIPAR 1N - 4.1% up to FLO70;
- SUTOT 1N - 5.5% up to FLO90.
2. If unable to maintain the minimum climb gradient, advise ATS unit.