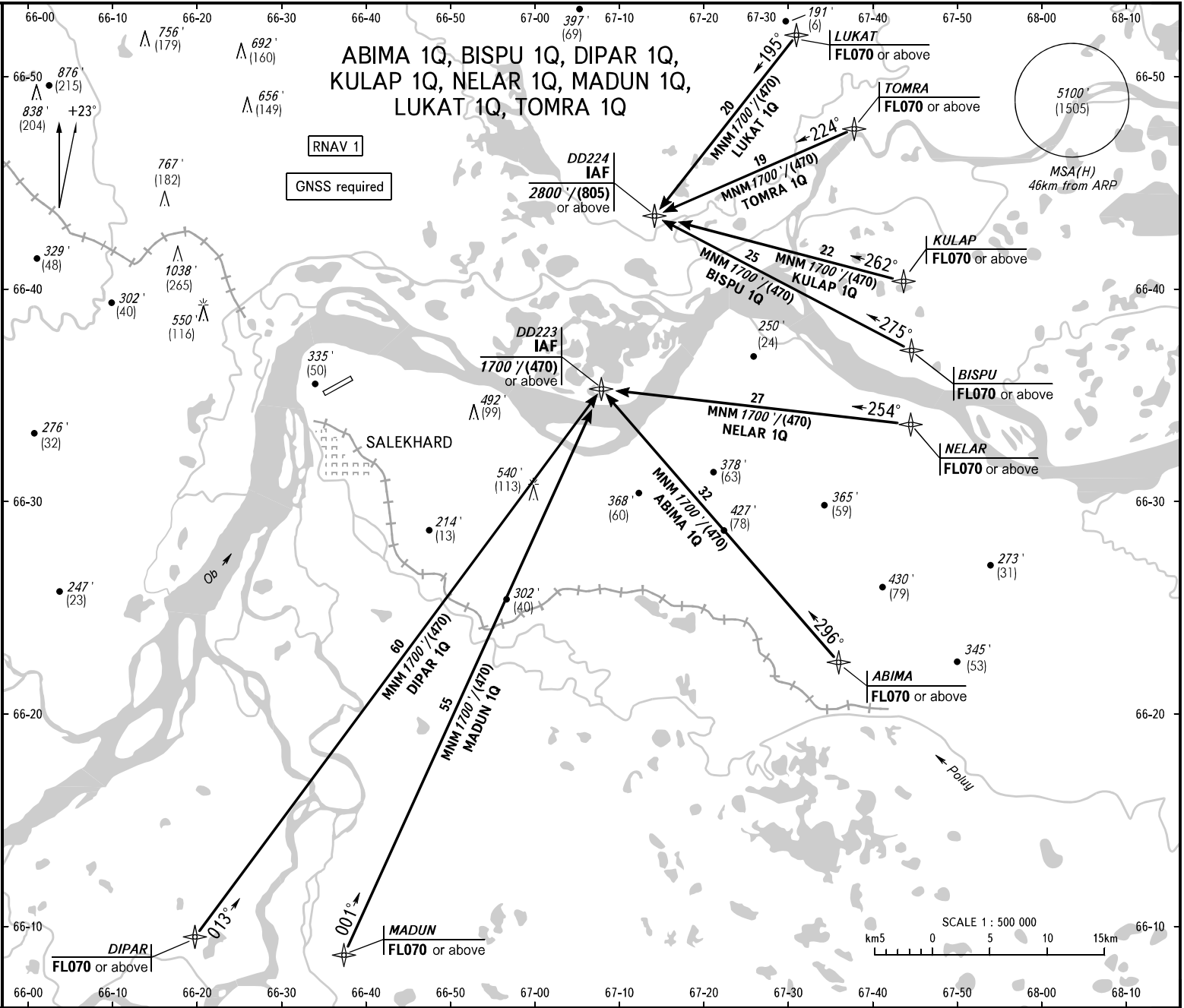


STANDARD ARRIVAL CHART  
INSTRUMENT (STAR) - ICAO

TRANSITION  
LEVEL: **1**

SALEKHard, RUSSIA  
SALEKHard  
RNAV Rwy 22



**1** TRANSITION LEVEL:  
 - FLO70 when QNH is 984 hPa (738mm mercury column) or above;  
 - FLO80 when QNH is 948 hPa (711mm mercury column) or above,  
 but less than 984 hPa (738mm mercury column);  
 - FLO90 when QNH is less than 948 hPa (711mm mercury column).

**KRUG START**  
**120,800**  
**118,600**

BEARINGS AND TRACKS ARE MAGNETIC  
 ALTITUDES IN FEET  
 ELEVATIONS IN FEET AND METRES  
 HEIGHTS IN METRES  
 DISTANCES IN KILOMETRES

All set: QNH/QNH on req);  
 -hPa (mm on req).