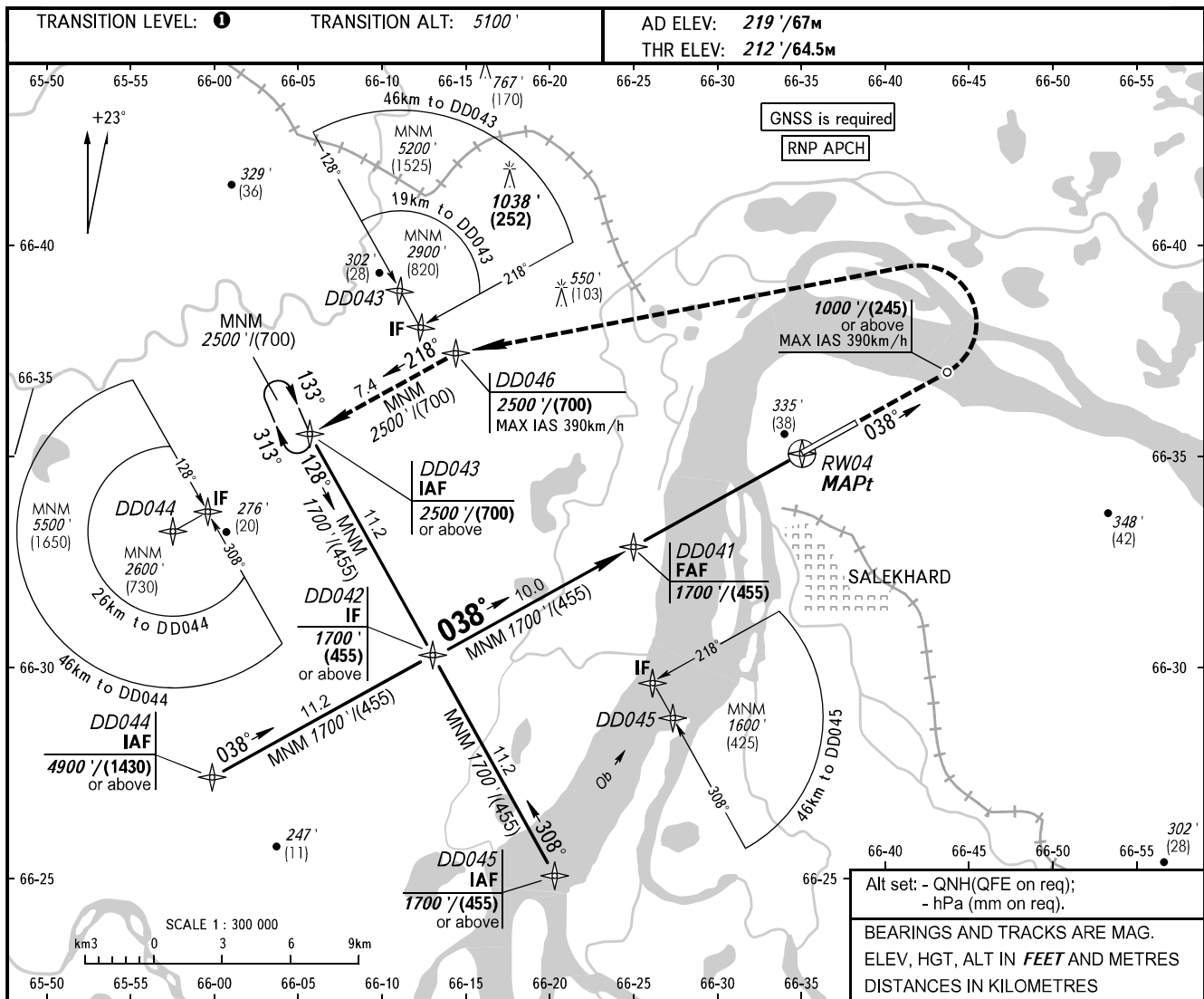


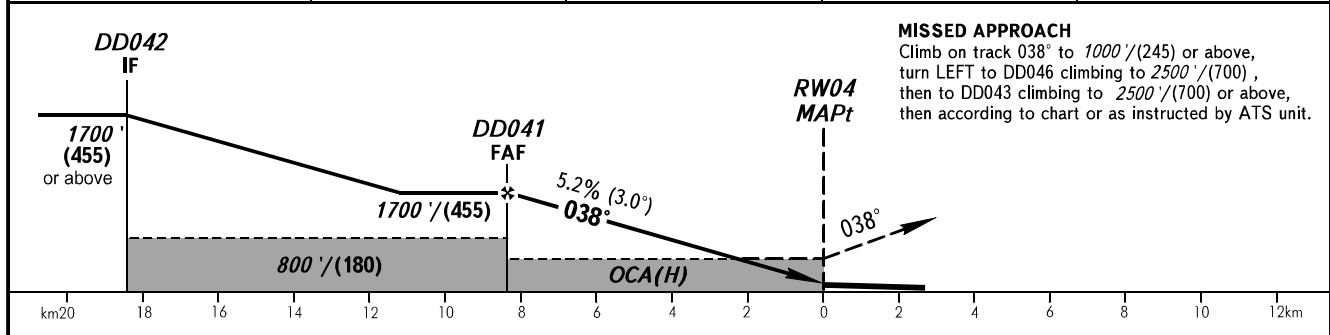
**INSTRUMENT  
APPROACH  
CHART - ICAO**

KRUG	120.800
START	118.600

**SALEKHARD, RUSSIA**  
SALEKHARD  
RNP RWY 04



RW04	8.0	6.0	4.0	2.0
ALTITUDE/HEIGHT	1630' / (435)	1290' / (330)	950' / (225)	610' / (125)



**MISSED APPROACH**  
Climb on track 038° to 1000' / (245) or above, turn LEFT to DD046 climbing to 2500' / (700), then to DD043 climbing to 2500' / (700) or above, then according to chart or as instructed by ATS unit.

OCA(H)		A	B	C	D
Straight-in Approach		600' (390') (120)	600' (390') (120)	600' (390') (120)	600' (390') (120)
	Circling	660' (440') (135)	720' (500') (155)	820' (600') (185)	910' (690') (215)

**1** TRANSITION LEVEL:  
- FL070 when QNH is 984 hPa (738mm mercury column) or above;  
- FL080 when QNH is 948 hPa (711mm mercury column) or above, but less than 984 hPa (738mm mercury column);  
- FL090 when QNH is less than 948 hPa (711mm mercury column).

**WARNING**  
Visual manoeuvring in sector 047°-210° is PROHIBITED.

GROUND SPEED	km/h	150	180	210	240	270	300	330	360	390	420	450
RATE OF DESCENT	m/s	2.2	2.6	3.1	3.5	3.9	4.4	4.8	5.2	5.7	6.1	6.6
	ft/min	433	512	610	689	768	866	945	1024	1122	1201	1299

CHANGE: New chart