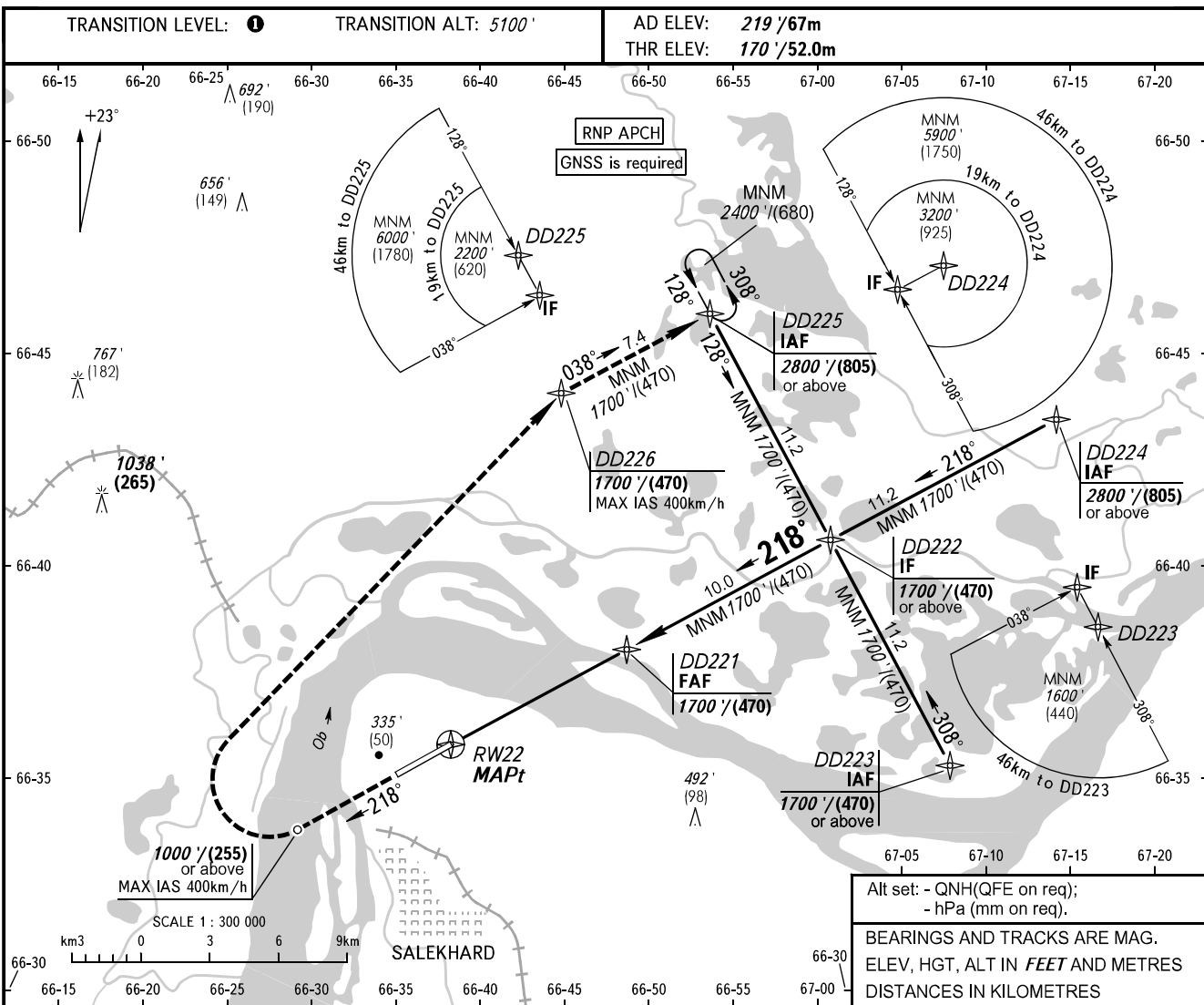


**INSTRUMENT  
APPROACH  
CHART - ICAO**

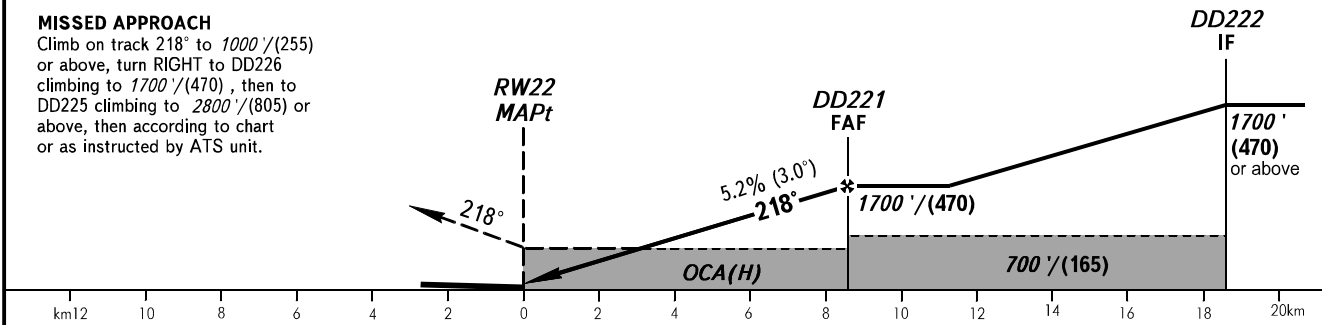
|       |         |
|-------|---------|
| KRUG  | 120.800 |
| START | 118.600 |

**SALEKHARD, RUSSIA**  
SALEKHARD  
RNP RWY 22



Alt set: - QNH(QFE on req);  
- hPa (mm on req).  
BEARINGS AND TRACKS ARE MAG.  
ELEV, HGT, ALT IN FEET AND METRES  
DISTANCES IN KILOMETRES

|                 |            |            |             |             |
|-----------------|------------|------------|-------------|-------------|
| RW22            | 2.0        | 4.0        | 6.0         | 8.0         |
| ALTITUDE/HEIGHT | 570'/(125) | 910'/(230) | 1250'/(330) | 1590'/(435) |



| OCA(H)               |                      | A                    | B                    | C                    | D |
|----------------------|----------------------|----------------------|----------------------|----------------------|---|
| Straight-in Approach | 490' (310')<br>(100) | 490' (310')<br>(100) | 490' (310')<br>(100) | 490' (310')<br>(100) |   |
|                      | 660' (440')<br>(135) | 720' (500')<br>(155) | 820' (600')<br>(185) | 910' (690')<br>(215) |   |

**TRANSITION LEVEL:**  
- FLO70 when QNH is 984 hPa (738mm mercury column) or above;  
- FLO80 when QNH is 948 hPa (711mm mercury column) or above, but less than 984 hPa (738mm mercury column);  
- FLO90 when QNH is less than 948 hPa (711mm mercury column).  
**WARNING**  
Visual manoeuvring in sector 047°-210° is PROHIBITED.

|                 |        |     |     |     |     |     |     |     |      |      |      |      |
|-----------------|--------|-----|-----|-----|-----|-----|-----|-----|------|------|------|------|
| GROUND SPEED    | km/h   | 150 | 180 | 210 | 240 | 270 | 300 | 330 | 360  | 390  | 420  | 450  |
| RATE OF DESCENT | m/s    | 2.2 | 2.6 | 3.1 | 3.5 | 3.9 | 4.4 | 4.8 | 5.2  | 5.7  | 6.1  | 6.5  |
|                 | ft/min | 433 | 512 | 610 | 689 | 768 | 866 | 945 | 1024 | 1122 | 1201 | 1299 |